

EXPRESSTM Origo ICR6-1

Digital intraoral imaging plate system

Field Service Manual

Document no. **210586 rev.2**
(2014-06)

EXPRESS™ Origo ICR6-1

Digital intraoral imaging plate system

Field Service Manual

Medical Device Directive
93/42/EEC



Document no. **210586 rev.2** (2014-06)

Copyright © 06/14 by Instrumentarium Dental.
All rights reserved.

EXPRESS™ is a
common law trademark of Instrumentarium Dental,
PaloDEX Group Oy.

Documentation, trademark and the software are copyrighted with all rights reserved. Under the copyright laws the documentation may not be copied, photocopied, reproduced, translated, or reduced to any electronic medium or machine readable form in whole or part, without the prior written permission of Instrumentarium Dental.

Manufactured by
Instrumentarium Dental, PaloDEX Group Oy
Nahkelantie 160 (P.O. Box 20)
FI-04300 Tuusula
FINLAND
Tel. +358 10 270 2000
Fax. +358 10 270 2230

TABLE OF CONTENTS

INTRODUCTION.....	5
DISCLAIMER	5
SCOPE.....	5
INSTRUCTION / COMMAND SYNTAX USED IN THE MANUAL:.....	5
ACRONYMS USED IN THIS MANUAL	5
OPERATING WARNINGS AND PRECAUTIONS	6
SERVICING PRECAUTIONS.....	6
SYSTEM DESCRIPTION.....	8
BLOCK DIAGRAM	8
ID EXPRESS ORIGO ASSEMBLY	9
SCANNER MECHANISM ASSEMBLY	10
ELECTRONICS	12
FIRMWARE.....	14
USER INTERFACE STATUSES.....	15
SERVICE TERMINAL	17
ACCESSING SERVICE TERMINAL	17
NORMAL AND SERVICE MODE OF THE UNIT	19
SERVICE COMMAND PRINCIPLES	19
SERVICE LOG	20
CONFIGURATION PARAMETERS.....	21
SHOWING / SETTING CONFIGURATION PARAMETERS.....	21
AUTOSTART <AUTOSCAN>	21
BEEPER.....	21
ENERGY SAVE MODE <IDLE>	21
AUTOMATIC SHUTDOWN <OFF>	21
RESTORING FACTORY SETTINGS.....	21
TROUBLESHOOTING.....	22
ERROR MESSAGES	22
ERROR 1, K100	22
ERROR 2, PMT.....	23
ERROR 3,LASER	24
ERROR 4, RESONATOR	24
ERROR 12, K200 NOT CONNECTED.....	25
ERROR 13, K300 NOT CONNECTED.....	25
ERROR 23, K200	26
ERROR 24, LINEAR MOVEMENT	27
ERROR 34, PLATE SENSOR.....	28
ERROR 123, DOOR MOVEMENT ERROR	28
ERROR 124, SAFETY COVER.....	29
ERROR 234, UI.....	30
MAINTENANCE.....	31
ROUTINE CHECKS WITHOUT OPENING THE UNIT	31
ROUTINE CHECKS WHEN UNIT OPENED:.....	31
Plate carrier belt (conveyor belt):	32

<i>Tension check and adjustment</i>	<i>32</i>
INSTRUCTIONS FOR CHANGING SPARE PARTS	34
REMOVING AND INSTALLING THE COVERS	34
<i>COLOR ACCENT PANEL.....</i>	<i>34</i>
<i>BACK COVER.....</i>	<i>35</i>
<i>FRONT COVER</i>	<i>35</i>
<i>CONTROL PANEL.....</i>	<i>36</i>
<i>LIGHT COVER</i>	<i>37</i>
REPLACING MOVEMENT KIT PARTS (SP00912).....	38
REPLACING OUTER COVERS (SP00989)	43
REPLACING INNER LIGHT PROTECT COVER (SP00914).....	43
REPLACING CONTROL PANEL ASSEMBLY (SP00991)	43
REPLACING K200 HOME-LASER-DETEC IPS-2013 (SP00916).....	44
REPLACING K300 PLATE DETEC REFL.SEN IPS-2013 (SP00917)	45
REPLACING LASER AND MIRROR ASSEMBLY IPS-2013 (SP00918)	46
REPLACING PMT (SP00919)	47
REPLACING UNIT DOOR (SP00920)	47
FIRMWARE AND CORE UPGRADE.....	48
FIRMWARE.....	48
CORE UPGRADE.....	48
TROUBLESHOOTING.....	49
ERRORS WITHOUT ERROR CODE	49
IMAGE ERRORS.....	50
<i>Improper use of the hygiene accessories</i>	<i>50</i>
<i>Improper X-ray settings used.....</i>	<i>50</i>
<i>Ghost images, shadows.....</i>	<i>50</i>
<i>Improper aiming of the X-ray</i>	<i>50</i>
<i>Unsharp / blurred images.....</i>	<i>51</i>
<i>Geometry distortion.....</i>	<i>51</i>
<i>Decreased contrast, shadows/shading, ghost images.....</i>	<i>51</i>
<i>White or grey dots/spots/stains in images</i>	<i>51</i>
<i>Wearing of the imaging plates</i>	<i>51</i>
<i>Image shows different size than the IP used.....</i>	<i>53</i>
<i>Circle on image.....</i>	<i>53</i>
<i>Vertical stripe(s).....</i>	<i>53</i>
<i>White bar before image</i>	<i>54</i>
<i>PMT problems.....</i>	<i>54</i>
<i>Incorrect dimensions</i>	<i>54</i>
<i>Compressed (too narrow) image.....</i>	<i>54</i>
SPARE PARTS	55
APPENDIX 1: TEST AFTER REPAIR.....	59
APPENDIX 2: ELECTRICAL SAFETY TESTING IN ACCORDANCE WITH THE IEC 62353 STANDARD FOR SCANNER.....	60
INTRODUCTION	60
WARNINGS AND PRECAUTIONS	60
VISUAL INSPECTION.	61

INTRODUCTION

Disclaimer

Manufacturer endeavors to produce product documentation that is accurate and up to date. However, our policy of continual product development may result in changes to products that are not reflected in the product documentation. Therefore, this document should not be regarded as an infallible guide to current product specifications. Manufacturer maintains the right to make changes and alterations without prior notice.

Scope

This manual provides the information necessary to perform field servicing and maintaining of the EXPRESS™ Origo Digital imaging plate system (hereafter referred as a "scanner unit").

NOTE: THIS MANUAL IS NOT A STAND-ALONE MANUAL AND MUST BE READ TOGETHER WITH THE USER'S MANUAL

Only trained and approved service personnel of authorized distributors are allowed to service the unit.

Unit can be sent to manufacturer for repair if it cannot be repaired by:

- Performing the calibrations instructed in this manual AND
- Replacing field serviceable parts

Instruction / command syntax used in the manual:

<text> The text inside the brackets is typed in exactly as instructed + followed by enter

Example **<reset>** means typing: **reset** (and pressing **enter**)

Example **<idle>** Show the time unit waits before goes to standby

Example **<idle XXX>** Sets time (XXX seconds) unit waits before goes to standby

Acronyms used in this manual

ADC	Analog to Digital Converter
Cmd	Command
DSD driver	The device driver used together with an imaging application
EMC	Electromagnetic compatibility
EMI	Electromagnetic interference
FW	Firmware control the scanner unit operation
HV	High Voltage
I/O	Input/Output
IP	Imaging Plate
IP address	Internet Protocol Address, typically looks like 192.168.0.2
JXXXX	Connector number
Msg	Message
NIC	Network Interface Card
PMT	Photo Multiplier Tube (=Photo detector)
PSU	External Power Supply Unit

OPERATING WARNINGS AND PRECAUTIONS

CLASS 1 LASER EQUIPMENT

DANGER: Any failure to follow the recommendations and instructions in this manual may expose the user to laser radiation exceeding the class 1 specifications.

CAUTION:

- Do not move or knock the scanner when it is scanning.
- The use of control or adjustment or performance of procedures other than those specified herein may result in hazardous laser radiation exposure.
- This scanner must only be used to read image plates and must not be used for any other purpose. Only use the imaging plates and protective covers that are supplied by scanner unit manufacturer. NEVER use imaging plates or protective covers from other manufacturers with the scanner
- This scanner, or its accessories, must not be modified, altered or remanufactured in any way.
- Only the manufacturer's authorized service personnel are authorized to carry out annual maintenance and repair. There are no user serviceable parts inside.
- This device can interfere with other devices due to its EMC characteristics.
- Other devices can interfere with this device due to their EMC characteristics.
- This device complies with IEC 60601-1 standard. Accessory equipment connected to this device must be in compliance with the related nationally harmonized IEC standards.
- Equipment not suitable for use in the presence of flammable anesthetic mixture with air or with oxygen or nitrous oxide.
- Only use the power supply unit that is supplied with the scanner. Do not use any other power supply units with the scanner.
- Use RJ45 UTP network cable, CAT 6
- Other cables and accessories may negatively affect EMC

Servicing Precautions

WHEN SERVICING EXPRESS™ ORIGO ALWAYS TURN POWER OFF AND DETACH POWER SUPPLY AND ETHERNET CONNECTORS BEFORE OPENING THE COVERS.

DO NOT ATTACH POWER SUPPLY AND ETHERNET CONNECTORS BACK UNTIL COVERS ARE INSTALLED BACK.

ESD

When servicing & unit covers being open, please note that inside the unit all electrical components are ESD sensitive. Appropriate protective methods (ESD wristbands, ESD safe working areas & ESD clothes etc...) must be used against ESD problems.

Laser Radiation

There is a class 3B laser inside the scanner. The laser can be activated if the light beam in the optic safety switch is blocked and the laser is switched on from the service terminal. Avoid direct exposure to the laser beam or its' reflections (for instance from shiny tools etc).

High Voltage

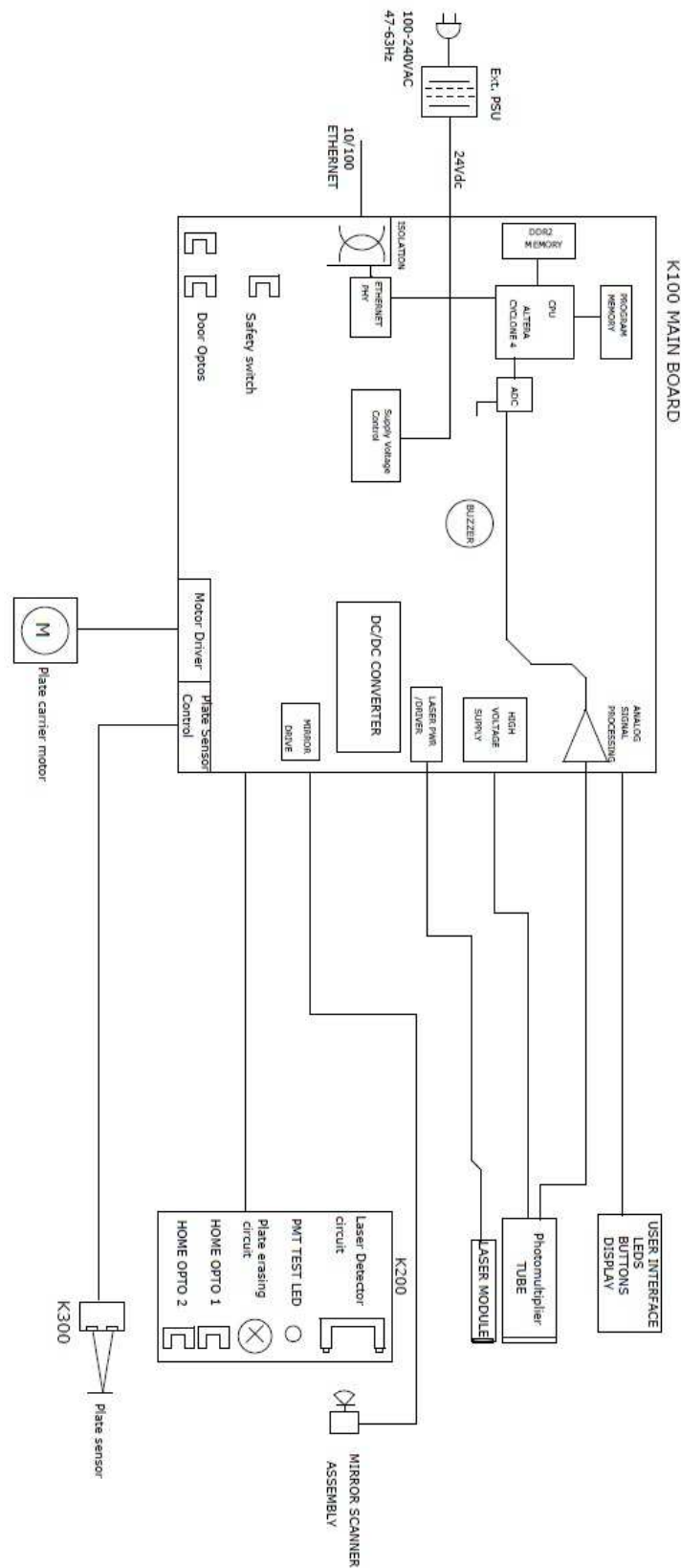
There is a high voltage circuit between the photo multiplier tube and amplifier card. High voltage can be set on when the light beam of opto safety switch is blocked. See service commands.

Light Sensitivity of Photo Multiplier Tube

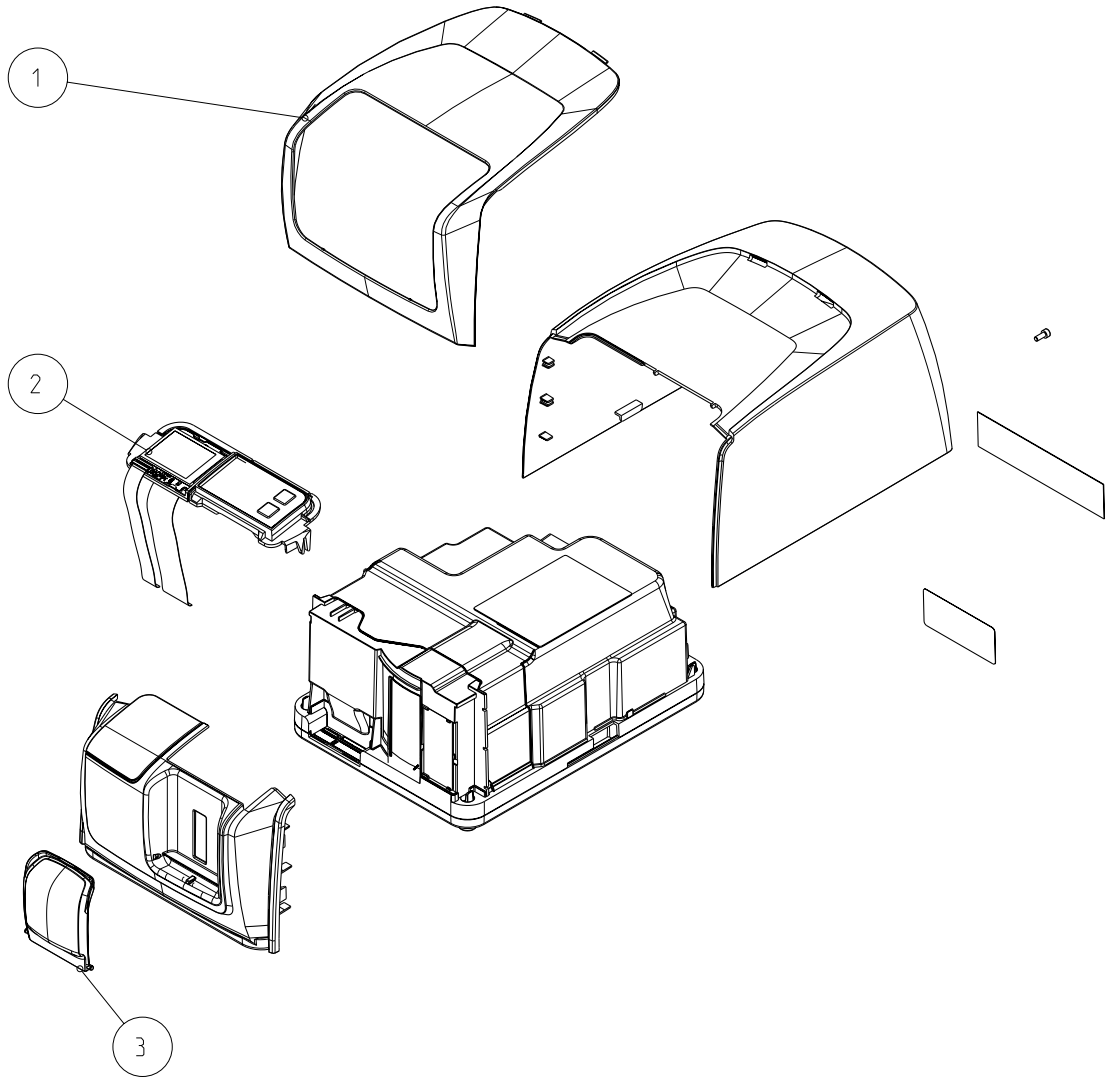
The tube is very sensitive to light when it is active. Tube is activated when the high voltage is turned on. The tube is used to measure extremely small amounts of light. Normal room light and brighter light sources damage HV-activated tube.

SYSTEM DESCRIPTION

Block diagram



ID EXPRESS ORIGO ASSEMBLY

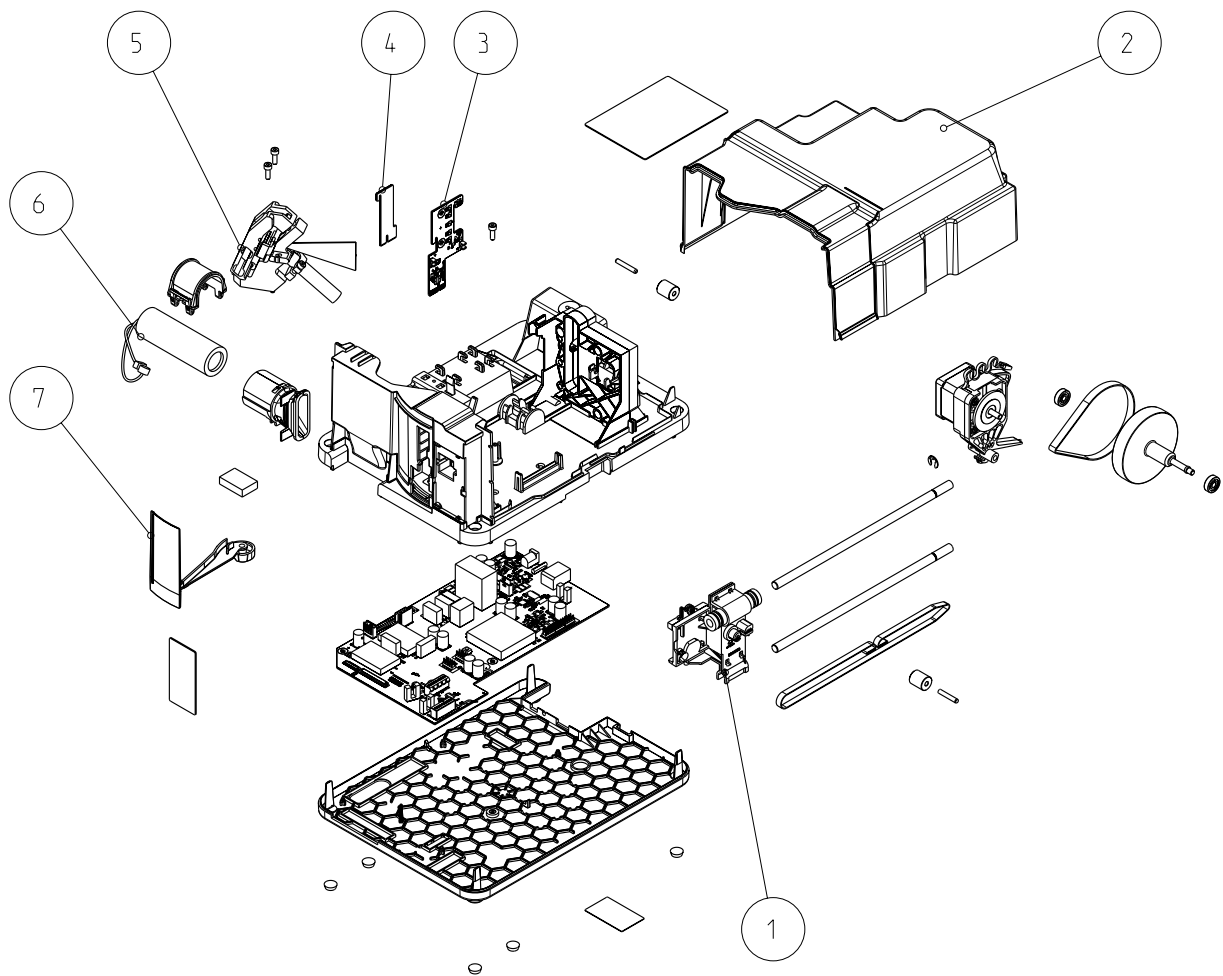


ITEM	CODE	DESCRIPTION	RECYCLING INFORMATION MATERIAL
1	SP00989	OUTER COVERS EXPRESS ORIGO	PC+ABS
2	SP00991	CONTROL PANEL EXPRESS ORIGO	Frame: PC+ABS Others: E-scrap
3	SP00993	IMAGING PLATE COLLECTOR	PC+ABS

NOTE!
Products without part numbers are not for sale.

- SP00989 OUTER COVERS EXPRESS ORIGO includes:
- 1 pcs SCANNER FRONT COVER
 - 1 pcs SCANNER BACK COVER with ICR6 TYPE LABEL and LASER CLASS3B WARNING LABEL
 - 1 pcs ID SCANNER COLOR ACCENT PANEL
 - 1 pcs IMAGING PLATE COLLECTOR
 - 1 pcs M4X8 DIN85 FEZN

SCANNER MECHANISM ASSEMBLY

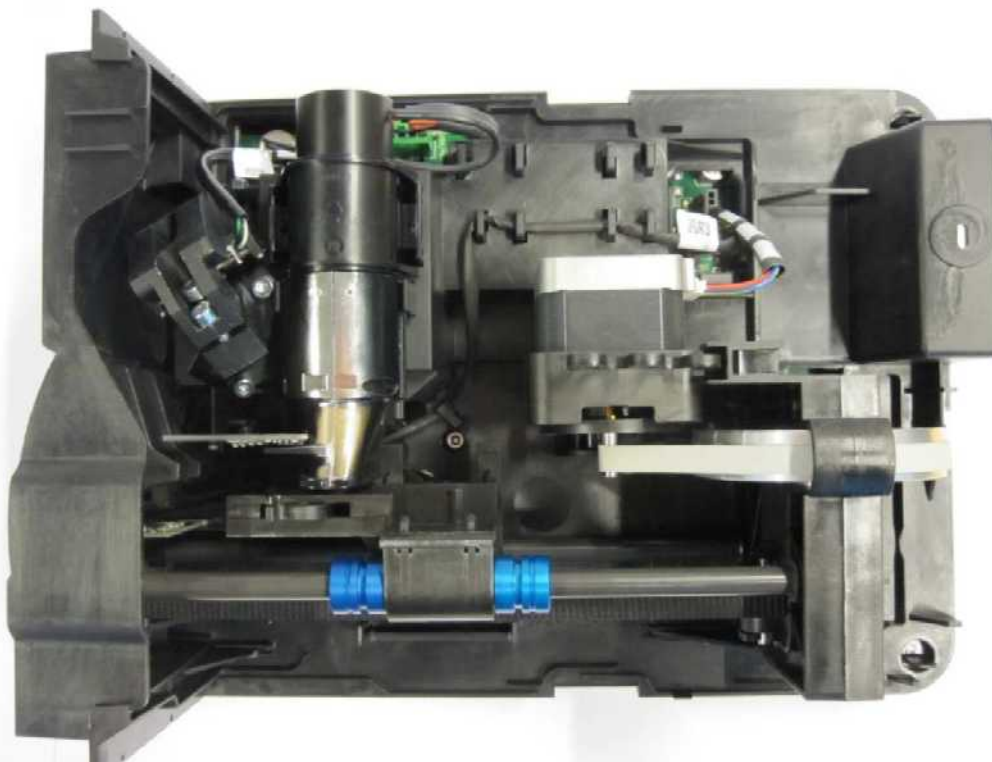


ITEM	CODE	DESCRIPTION	RECYCLING INFORMATION MATERIAL
1	SP00912	MOVEMENT KIT IPS-2013	
2	SP00914	INNER LIGHT PROTECT COVER IPS-2013	PC+ABS
3	SP00916	K200 HOME-ERASE-LASERDETEC IPS-2013	E-SCRAP
4	SP00917	K300 PLATE DETECT REFL.SEN IPS-2013	E-SCRAP
5	SP00918	LASER AND MIRROR ASSEMBLY IPS-2013	E-SCRAP
6	SP00919	PMT, PHOTO MULTIPLIER TUBE IPS-2013	E-SCRAP
7	SP00920	UNIT DOOR IPS-2013	PBT/Steel

NOTE!
Products without part numbers are not for sale.

SP00912 MOVEMENT KIT IPS-2013 includes

PCS	ITEM	RECYCLING INFORMATION MATERIAL
2	SHAFT CCM08 CERAMIC COATED	Aluminum, ceramic coated
1	BELT PULLEY COVER	POM
1	IMAGING PLATE CARRIAGE ASSEMBLY	POM/NdFeB/ Aluminum/ Glass-fiber reinforced polyarylamide
1	MOTOR HOLDER ASSEMBLY	POM/Steel/E-scrap
1	READOUT HEAD BELT MXL025-G	Rubber
1	BELT 264X8 CH XL GA152 MANDREL84.1	Rubber
1	BELT PULLEY 73.8 - 5.4	Aluminum
2	BELT PULLEY	POM
2	BEARING 625 ZZ	Steel
1	DOWEL PIN 4H6X24 DIN6325	Steel
2	LOCKRING 6 DIN6799	Steel
1	NEEDLE ROLLER NRB4X25,8-G2	Steel



Covers and control panel assembly removed

Electronics

Powering of the boards:

- INPUT voltage 24VDC from External Power Supply is connected to K100 Main Board where supply voltages to internal circuits are made
- Other boards are powered from K100.
- For proper operation all boards must be attached

External Power Supply Unit

- Universal input, auto switching (100-240 VAC / 47-63Hz).
- Most commonly used AC plugs available (EU, US, UK, AU)
- Output 24VDC / 1.25A / 30W

- Output connector 2.1mm center+ DC plug
- No serviceable parts inside. **Do not open.**



K100 Main Board

- System clock
- CPU inside FPGA (incl. Ethernet controller and other logic)
- System configuration flash-memory
- General-purpose DDR2 memory
- Ethernet interface (10M/100M)
- AD conversion (14 bit, AD9245)
- Led D27 +12V-START: indicates that input 24V is connected. This is located near DC plug and is connected to back using light pipe
- LED D11 is activity led. D12 is speed led, it is on when Ethernet PHY has established link at 100 Mbps. These are connected to the back using light pipe.
- Analog signal processing circuitry
- Low voltage regulators for all boards & for laser
- High voltage power supply for PMT (J106)
- Analog signal from PMT J113
- Circuitry for checking the high voltage.
- I/O between to K200, K300 and user interface
- Safety optoswitch D29 prevents the switching of laser and PMT high voltage without the light cover being installed.

CONTROL PANEL ASSEMBLY

- Membrane keyboard, which has leds and control keys on it.
- See user's guide for more detailed description of keys and indicator lights.
- Display and cables.

K200 ERASE AND LASER DETECTION BOARD

- Contains two pin diodes (Q1 and Q2) that are used to synchronize laser movement.
- LEDS for erasing the image plate residual image and control circuit for erasing
- Opto switches D14 and D15 for sensing linear movement

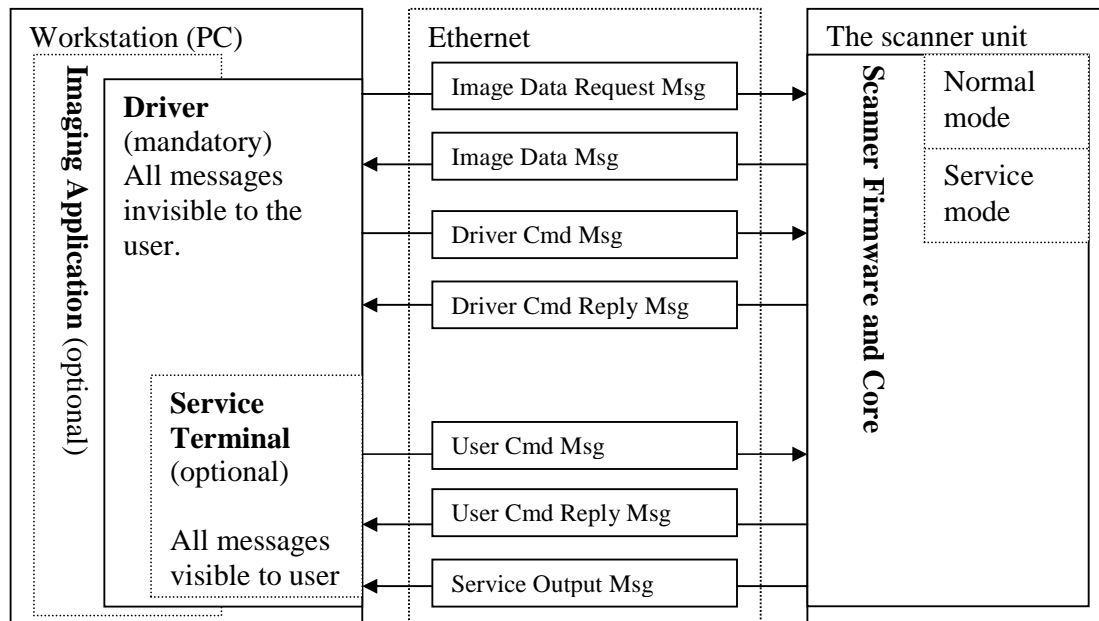
- Blue led which can be used to check PMT operation. It's brightness can be controlled by CPU

K300 PLATE SENSOR BOARD

- Contains circuits for sensing image plate and that it is correctly inserted. Led emits light which is reflected from IP to the photodiode receiver.

Firmware

Architecture



Imaging Application

- End user's interface to acquired images.
- Handles image archiving and displaying.

Driver

- Handles the connection/communication to the unit
- Transfers and manipulates images.
- Unit cannot operate without Driver

There are two alternatives to be used as a driver:

1. DSD driver. Run from Application (or other imaging application)
2. s2terminal program. Run from the command prompt of Windows.

Service Terminal

- Optional part of the driver.
- Execute user commands
- View the service output of the unit.
- Run from the command prompt of Windows.

Scanner Firmware and Core

Takes care of the normal unit operations.

- Operates either in normal mode or service mode.
 - **Normal mode:** Unit is fully operational and images can be acquired.
 - **Service mode:** Unit does not react to any other inputs than those given by the user through service terminal.

USER INTERFACE STATUSES

First the user press power button. During boot the system makes initialization and self test.

1. User presses unit power button
2. Scanner initializes HW
3. Scanner checks that all boards are connected.
4. Scanner IP address configuration is started
5. Scanner drives linear movement to find position where door is closed.
6. Scanner sets linear amplifier offset
7. Check HV
8. Check PMT with blue led
9. Check erase led current and voltage
10. Check mirror resonator operation and stability
11. Check laser
12. Check plate sensor
13. Drive plate carriage out
14. READY for operation (if connection to the application SW is OK)

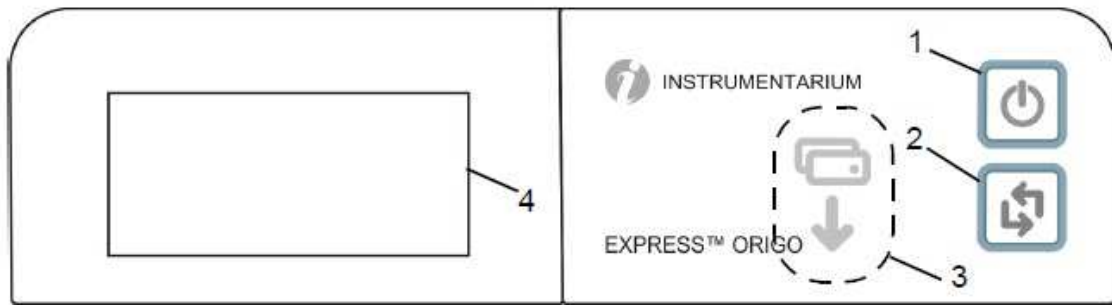
ERROR CODE is displayed if everything NOT OK during start.

NOTE: if the light protection covers surrounding scanner module is removed EXPRESS™ Origo goes into error state after erase led test and self test sequence is halted (recovering from this needs restart of the unit after installing the covers back)

NOTE! If the opto safety switch light is blocked during start and covers removed – the PMT may be damaged! Do not turn unit on when the light cover is removed.

Turning off is not possible if image is not transferred to imaging software (for example Ethernet connection was lost before transfer), unit beeps and blinks PC and connection leds. The carrier is driven in. The unit will not shutdown automatically. You must start application and receive image before turning the unit off. You must turn the unit off only by on/off button.

UI PANEL



1. ON/OFF key
2. START key
3. Plate feeding indicator
4. Status display

The use of UI panel display symbols, leds and buttons are described in the user manual.

LEDs backside



The Ethernet speed led is lit when link speed is established at 100Mhz.
At other speeds the led is off. Activity LED blinks when the unit sends or receives data over the Ethernet network.

SERVICE TERMINAL

Service terminal is not an end user interface and training to use it in advance is mandatory to prevent the changing of unit configuration (=resulting the unit to become inoperative) accidentally.

Be very careful not to use service commands without the necessary know-how. Gain knowledge by going through all useful commands and train their usage in practice with scanner unit.

Service terminal commands and functions are not explained in this manual. They are instructed in the scanner firmware help (which is accessible through service terminal). This arrangement is to keep the documentation up to date, since the service terminal instructions for commands are always up to date in the scanner firmware. Therefore this manual explains only the principles of the main commands.

More detailed instructions of Service Terminal commands can be found later in this document and in their help outputs **<h [command]>**.

Accessing Service Terminal

- Service terminal commands are controlled from s2terminal

NOTE: Only have either imaging application OR s2terminal open at one time.

- Service commands are executed by scanner unit
- Firmware and core upgrade can only be performed with s2terminal
- s2terminal program is run from the command prompt of Windows.
- Application must be closed when accessing service terminal from s2terminal If Application is opened at the same time, you will have a "login fail (no connection)" error message on screen when trying to make the connection.

Note the difference of actual command prompt and the s2terminal program running in it:

- The input and output of the s2terminal and of the command prompt look similar.
- However, the functions and commands available in the command prompt are not available in the s2terminal and vice versa.
- If you get confused it is good idea to check the title bar of the command prompt window - it should read "s2terminal" when the s2terminal program is running.
 - it reads "cmd.exe" when only Command Prompt is running
- Running the s2terminal program needs the following files:
 - s2terminal.exe
 - s2.dll
 - W32N55.dll
 - (s2terminal has to be version 7.7.1188.0 or later)
 - S2terminal can be found usually from folder: Program files/Palodex Group/IAM/

1. Copy all these files to one same and dedicated service folder that you may need to create (in following example "c:\s2terminal" folder is used to store s2terminal files)
2. Select from Windows: **Start / Programs / Accessories / Command Prompt**
Or
Select from Windows: **Start / run**
3. Type into "Open" -field: **<cmd>**
4. Choose **OK**
Command prompt examples:
 - **<cd\>** (Changes to the root directory =C:\)
 - **<cd s2terminal>** (changes to directory "s2terminal")
5. **CHECK THAT Application IS NOT OPENED**
6. Type **<s2terminal>** in the command prompt to see the instructions for the command syntax. Then execute the program using the unit's IP -address.
7. Type **<s2terminal 192.168.0.2>**:
 - Starts the Service Terminal for unit having ip 192.168.0.2
 Or
 Type **<s2terminal 192.168.0.2 -c>**:
 - Starts the service terminal and configures ip -address to scanner unit 192.168.0.2

NOTE: Keep start button pressed when entering <s2terminal 192.168.0.2 -c>:
8. If the IP-address is correct and the s2terminal program is able to connect to the unit, it prints out terminal output of the login command, which displays "s2terminal, the unit's firmware version(s), serial number and some parameters". Otherwise it displays an error message(s).
NOTE: It is normal that you may have few times "login fail (no connection)" -error also in normal functioning connection
9. Quit s2terminal program by **<xq>**

Normal and Service Mode of the Unit

Service terminal can be used having scanner unit in Normal mode or Service mode

- Normal mode = Normal operation, use Service terminal to monitor the scanner unit operation
- Service mode = scanner unit Executes only the commands given from Service terminal.

Almost all of the service procedures described in this manual are done in the service mode.

Remember to quit the service mode before trying to use the unit normally.

<s> Activates the service mode – and “service>” prompt is shown in the service terminal.

NOTE! If scanner unit is in standby mode, the first command only exits the unit from the standby mode

<quit> Quits the service mode (=resumes scanner into normal operation mode).

<reset> Resets scanner unit. **(ONLY SW RESET)** Use if you get strange behavior when trying to use the unit after exiting the service mode. After reset you exit also the service mode

Service Command principles

General Principles for Command Usage

- About half of the commands activate a function, for instance the movement of the plate carrier or enabling the laser.
- The other half view or set the configuration parameters of the scanner unit.
- To use commands first see their description by **<h [command]>**.
>> Then read all of the description before actually using the command.

NOTE: Do not execute the command if you are not sure about it's function. Improper use of some commands may result scanner unit to become inoperative!

- Some commands are used to view and/or set different parameters of the unit.
- When issuing the command without any value (for example **<eject>**) it will display the current value of the parameter.
- If the parameter is followed with a value (for example **<hv 150>**) the parameter value is changed.

If the unit is in standby mode

- Does not execute the command, exits the energy saving mode when the command is entered for the first time
>> You have to enter the same command again to perform the required action.

Help Command

- The scanner firmware has built-in help.
- The help functionality is similar in both (Normal / Service) modes of the unit.

<h> Prints list of available commands
<h command> Typing h + any command followed by enter from the service terminal shows the help for particular command

Example:

<h calpr> Means that typing: h calpr (and pressing enter) shows the help for using calpr –options

<xh> s2terminal help menu

Configuration info

<conf> Shows the configuration parameters of the scanner unit

Service Log

Service log is a very useful tool for troubleshooting, so please learn how to use it!

- You can get list of the error messages, which helps on troubleshooting. (Every time an error is caught it is recorded into the service log).
- You can see the performed service procedures

- **Check service log before the service procedures AND**
- **Sign the service log after servicing, so that it later displays what service has been done for the unit.**

TIP: Copy the contents of the service log, paste it to Notepad, Word etc. and send to manufacturer Technical Service by Email.

That helps manufacturer staff to give troubleshooting support.

<h log> Shows the help for Service Log usage
<log> Shows the contents of Service Log after the latest service signature
<log all> Shows the whole contents of Service Log
<logsign> Signature =describe what kind of service you have performed.

Example: **<logsign plate was not erased. John Smith replaced the k200 board>**
 >> saves “plate was not erased. John Smith replaced the k200 board” to the service log

CONFIGURATION PARAMETERS

Showing / setting configuration parameters

- **<conf>** shows all configuration parameters of scanner unit
-factory settings are shown in parenthesis, like (60)
- **<parameter>** Shows the active and factory setting of parameter
- **<parameter XX>** Sets parameter value to XX, factory setting remains.

Autostart <autoscan>

- **<autoscan 0>** Configures scanner unit to start readout after START pressed
- **<autoscan 400>** Configures scanner unit to start readout
AUTOMATICALLY 0.4s after plate cover is removed
- **(<autoscan XXX>, XXX =delay in milliseconds)**

Beeper

- **<beeper 0>** Disables extra beeps (when going to idle mode etc...), but leaves all error and warning beeps enabled
- **<beeper 1>** Enables all beeps (including when going to idle mode etc...)

Energy save mode <idle>

- **<idle>** Shows time (seconds) scanner unit waits before goes to energy-save (60)
- **<idle XXX>** Sets time (**XXX seconds**) scanner unit waits before goes to energy-save

Automatic shutdown <off>

- **<off>** Shows time before automatic shutdown (minutes, 240 DEFAULT)
- **<off XXX>** Sets time (**XXX minutes**) before automatic shut-down

Restoring factory settings

- **<restore configuration>** restores the factory settings for all <conf> - parameters

You can also restore individually each parameter to their factory settings by commanding **<parameter XXX>**, where XXX is factory set value, which is shown after each parameter in parenthesis (XXX).

TROUBLESHOOTING

ERROR MESSAGES

Error codes are displayed by error number.
Error code is also written to the log file. Check the log file.

Following codes are displayed.

- 1 - K100 error
- 2 - PMT error
- 3 - Laser error
- 4 - Resonator error
- 12 - K200 not connected
- 13 - K300 not connected
- 23 - K200 error
- 24 - Linear movement error
- 34 - Plate sensor error
- 123 - Door movement error
- 124 - Safety cover error
- 234 - UI error
- 1234 - Other, see s2terminal or driver for more info



Example of error display: Error 3

Error 1, K100

Note, the K100 board cannot be changed in the field. These errors below can in most cases be corrected only if the K100 board is changed in the factory.

- 1-1 ERROR_K100_LIN_AMP_NOT_OK
- 1-2 ERROR_K100_CFG_DATA_LOST
- 1-3 ERROR_K100_HV_NOT_OK
- 1-4 ERROR_K100_1V2_VCCD_PLL
- 1-5 ERROR_K100_1V2_VCCINT
- 1-6 ERROR_K100_1V8
- 1-7 ERROR_K100_2V5_VCCA
- 1-8 ERROR_K100_3V3
- 1-9 ERROR_K100_3V3A
- 1-10 ERROR_K100_5V
- 1-11 ERROR_K100_24V

Check power adapter output voltage. If below 22.8V change the adapter.

- 1-12 ERROR_K100_DOOR_OPTOS_ACTIVE

This error comes if both door open and door closed optos light is blocked at the same time.

- 1-13 ERROR_K100_DOOR_OPEN_OPTO

Plate carrier is inside and light is blocked in the door open opto. (Door should be Closed).

1-14 ERROR_K100_DOOR_CLOSED_OPTO

Plate carrier is at home position and light in the door closed opto is blocked (Door should be open)

1-15 ERROR_K100_ETH_PHY

1-16 ERROR_K100_ADC

In cases 1-11,12,13 it is recommended first to check that there are no dust or other particles that blocks the light in the door optos.

You can also use command <diagnose> and check if the door opens and closes totally when carriage goes in and totally open when carriage goes out.

If door operates correctly and door open or door closed opto fails K100 board is faulty. K100 is not a spare part. You have to send the whole scanner back to factory for repair. If the door operation does not work correctly change the door (SP00920)

Error 2, PMT

PMT is tested during boot. Blue led at K200 board is used as the light source. Error occurs if signal is too low .

Reason: PMT fail/K100 fail or led light source is not working on K200 board

Check operation by command <diagnose> in service mode

-when HV is increased pmt value should increase from 0 to 16383. If this is not the case check the led light source:

-command <pmtled 1> in service mode turns the led on

-if you view from door opening you can see weak blue light at K200. It is easier to see at half-light.

-if led does not work you must change K200 board. (SP00916)

-if led works, open the covers and check that PMT cables are connected correctly.

-If cables are attached correctly change the PMT. (SP00919).



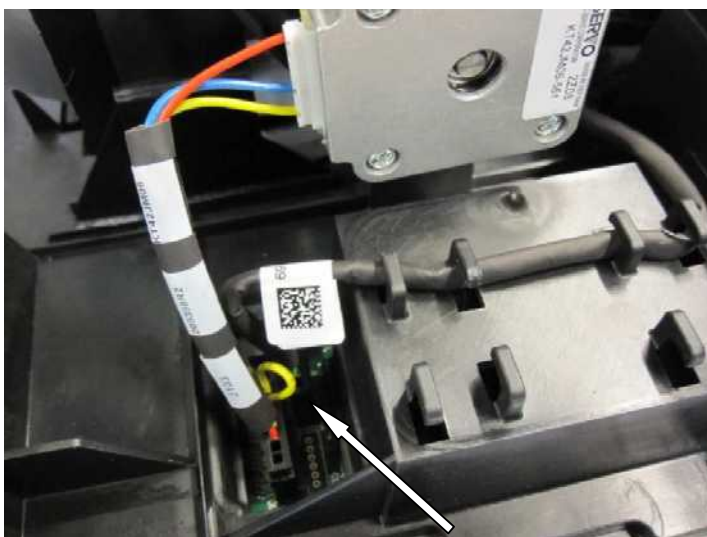
Error 3, Laser

CAUTION: CLASS 3B LASER INSIDE. WHEN SERVICING EXPRESS™ ORIGO ALWAYS TURN POWER OFF AND DETACH POWER SUPPLY AND ETHERNET CONNECTORS BEFORE OPENING THE COVERS. DO NOT ATTACH POWER SUPPLY AND ETHERNET CONNECTORS BACK UNTIL COVERS ARE INSTALLED BACK.

Problem: Laser does not turn on or it stays on constantly. This error is detected by K200 sync optos so laser sweep needs to reach sync optos for reliable detection.

Reason: Laser is faulty or laser connector is not connected.

Fix: Detach power and Ethernet connectors. Open the covers and check the laser connector. If ok you have to change the LASER AND MIRROR ASSEMBLY IPS-2013 (SP00918)



Laser connector

Error 4, resonator

4-0 ERROR_MIRROR_NOT_MOVING

It is first recommended to check that mirror cable is connected to K100 board. If connected but the mirror is still not working properly, you have to change the LASER AND MIRROR ASSEMBLY IPS-2013 SP00918

4-1 ERROR_MIRROR_UNSTABLE

This error comes if mirror is not stable. Too high magnetic field (>10A/m) might cause this error. A mechanical vibration on table or floor where the unit is placed can cause this error. First try the unit in different place. If the unit is still not working change the LASER AND MIRROR ASSEMBLY IPS-2013 SP00918

4-2 ERROR_MIRROR_FREQ

This error comes if mirror frequency too high or too low. Change the LASER AND MIRROR ASSEMBLY IPS-2013 SP00918

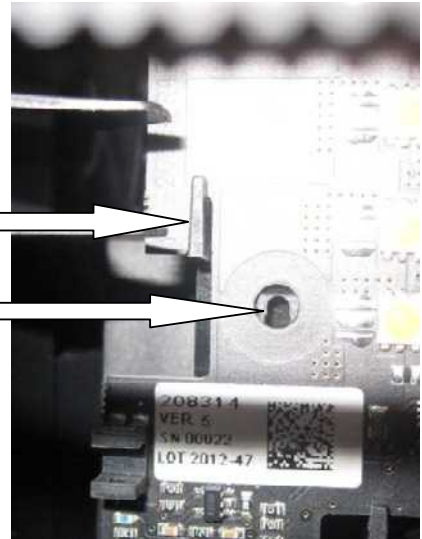
Error 12, K200 not connected

During startup unit checks K200 installation. If error 12 happens check that K200 is installed correctly (to the connector and to the mechanics). After that restart the unit.

See image. If error still exist replace the board K200HOME-ERASE-LASER-DETEC IPS-2013 (SP00916)

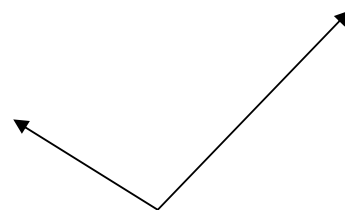
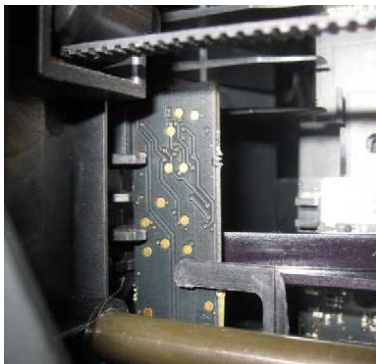
K200 is at this chassis slot

K200 is locked to this pin in chassis

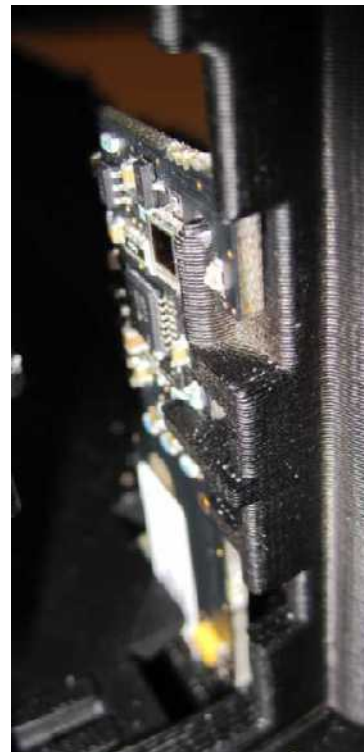


Error 13, K300 not connected

During startup EXPRESS™ Origo checks K300 installation. If error 13 happens check that K300 is installed correctly (to the connector and to the mechanics). After possible correction restart the unit. If error still exist replace the board. (SP00917 K300 PLATE DETEC REFL.SEN IPS-2013. Calibrate the board using command <calpr>.



K300 installed correctly



Error 23, K200

Erase led error, Linear opto error, Sync opto error

Unit checks erase led current and voltage across the leds, sync opto and linear movement opto operation.

If led current or voltage error occurs in K200 board which have been in use you cannot repair it by calibrating K200. Error means for example that some led is broken and calibration would mean wrong calibration values.

23-0 ERROR_K200_ERASE_LED

This error comes if LED forward voltage level differs >10% from the calibrated value. Check that all erase leds are light during erase. If leds are ok and unit still gives this error, make calerase. If the leds are not light correctly replace k200 board.

23-1 ERROR_K200_LINEAR_OPTO_HOME

This error comes if home opto (near the door) light is blocked. First check that there are no dust or other particles that blocks the light. If the opto is clean and the unit is still not working, replace k200 board.

23-2 ERROR_K200_LINEAR_OPTO_START

This error comes if start opto (near the pmt tube) light is always blocked. First check that there are no dust or other particles that blocks the light. If the opto is clean and the unit is still not working, replace k200 board.

23-4 ERROR_K200_SYNC_OPTO_TOP

This error comes if firmware does not get any pulses from the upper photo diode. The pulse does not come if the photo diode is broken or the laser does not hit the upper photo diode in k200 board. It is recommended first to check that k200 board is properly connected to k100 board connector and board is locked to the chassis.

23-5 ERROR_K200_SYNC_OPTO_BTM

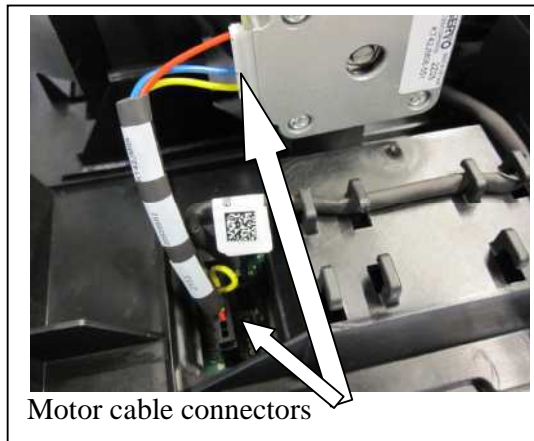
This error comes if firmware does not get any pulses from the lower photo diode. The pulse does not come if the photo diode is broken or the laser does not hit the lower photo diode in K200 board. It is recommended first to check that K200 board is properly connected to K100 board connector and board is locked to the chassis.

NOTE: If you are replacing a spare part board, you must calibrate the board. Use commands <calerase> , <calgear> and <calga>.
Replace K200HOME-ERASE-LASER-DETEC IPS-2013 (SP00916)

Error 24, Linear Movement

Occurs if plate carriage not moving (home or start opto doesn't change state) or if motor has open load or if motor cable is not connected.

Use command <diagnose> in service mode. Note the result. If home opto or inner opto fails and the carriage moves K200 board is defective. If carriage does not move you have to detach connectors and open the covers.



Motor cable connectors

24-0 ERROR_MOTOR

This error comes if motor connector short circuit wire is not connected. Check the motor connector. Check that cable wires and contacts are not broken.

24-1 ERROR_MOTOR_POSITION

This error comes if plate carrier does not block the light in correct time from the home or start optos in K200 board. That can happen if the motor is running in wrong speed (check that the short circuit wire in the motor cable is connected in correct pins). This can also happen if the motor belt is adjusted too loose and then the shaft and belt will slip.

24-2 ERROR_MOTORHOME_TOO_EARLY

24-3 ERROR_MOTORHOME_TIMEOUT

This error comes if plate carrier does not reach the home position at the specific time.

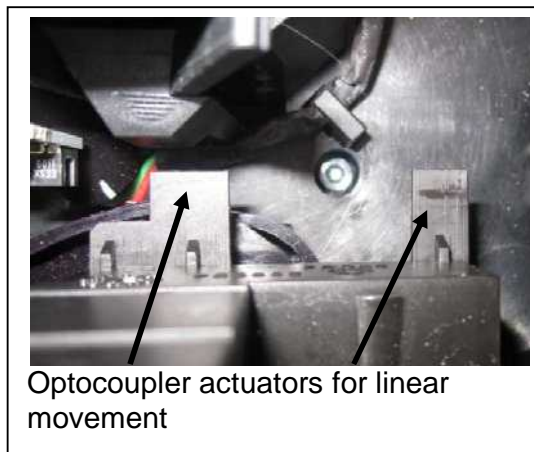
24-4 ERROR_MOTORHOME_STUCK.

Occurs if linear movement is stuck at home opto.

Checking linear movement errors

It is recommended first to check that the motor cable is connected to the motor and K100 board and that it is not broken (motor is not rotating). Check that plate carrier can move freely the whole length of the linear movement.

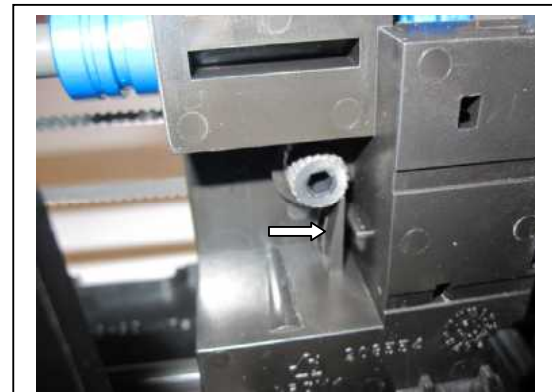
Rotate the motor damper wheel manually so that carriage moves from the door to the end plate. Check that damper is attached to the motor shaft correctly. It should not touch the drive belt or rotate freely. Check that the motor belt does not touch the chassis. Check that opto actuators in the carriage go through the opto slots without touching the optos. If this is ok and inner or home opto fail was reported change K200 board.



Optocoupler actuators for linear movement

Check conveyor belt tightness. See paragraph Plate carrier belt (conveyor belt): Tension check and adjustment.

Check that there is no mechanical reason which prevents linear movement for example image plate or protective covers.
Check that motor cable is connected correctly.
Check that cable wires and contacts are not broken. If you find broken linear movement parts you have to replace movement parts. (SP00912 MOVEMENT KIT)



Push release tab if you want to loosen the belt

If linear movement parts are adjusted or changed, linear movement calibration must be made. Write <calgear> in service mode.
After that test that start position is correct. Expose and read image, check horizontal position from image. Adjust with <start xxx>. Bigger value moves image left in application window, smaller value right. XXX can be also negative.

Error 34, plate sensor

34-0 ERROR_K300_PLATE_SENSOR
34-1 ERROR_K300_PLATE_SENSOR_BAD_FB

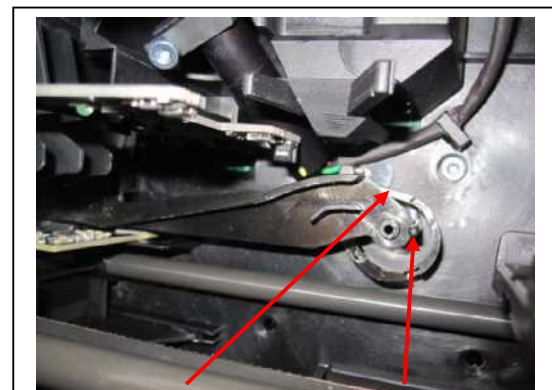
Occurs if signal is zero or at maximum level during boot or there is not enough reflection from the reference surface of the carriage. Change K300 board (SP00917 K300 PLATE DETEC REFL.SEN IPS-2013).
Calibrate the board using command <calpr>. If K300 spare part is not available at once you can still use the unit by setting autoscan to 0 in service mode. Now scanning begins when you press the start button but without checking that the image plate is installed correctly.

Error 123, Door movement error

Can occur if door closed/door open opto sensors does not change state when the carriage moves outside or inside. Error 123-1 means that door is not closed correctly. It can be slightly ajar.
The reason could be the spring that closes the door has weakened or there is something which causes friction between the door and the chassis preventing to shut the door.

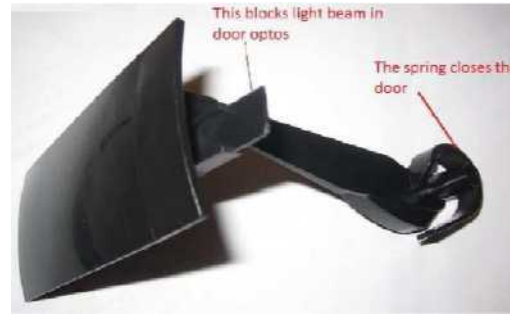
Detach the connectors, open the main cover and the light cover to check the door.

Check that the door is installed correctly. See image.



Correct spring position. The clip prevents the door from riding up.

Check that the spring shuts the door. For that move the plate carrier backwards and move the door by hand. Error 123-01 can mean that the spring which closes the door is too weak. Replace the door SP00920 UNIT DOOR IPS-2013



SP00920 UNIT DOOR IPS-2013

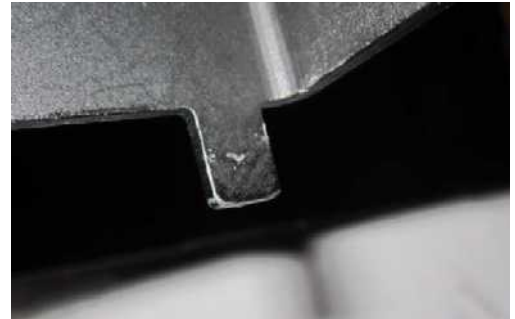
Error 124, Safety cover

Remove the main cover.
Check that the light cover is tightly to the chassis.
Check that the clip is not dead. Check also that the safety switch light block is intact.
There should not be space between the light cover and chassis. The clip spring force locks the clip hole to the chassis.

You can read safety switch state by command <cover>. If it is '1' cover is installed correctly. If '0' cover is not in right place.

If the cover is not ok replace it (SP00914 INNER LIGHT PROTECT COVER IPS-2013)

If the light cover is ok and installed correctly K100 safety opto might be faulty. You have to send the unit to factory for repair.



This blocks light in the safety opto



SP00914 INNER LIGHT PROTECT COVER IPS-2013



There should not be space between the light cover and chassis. The clip spring force locks the clip hole to the chassis.

Error 234, UI

234-0 ERROR_UI_NOT_CONNECTED.

Open the covers and check that the cable is properly connected to K100 board and user interface board. The cable contact pads must be against the circuit board. The cable must be straight when it leaves the connector. Make sure that the cable is pushed bottom of the connector and the connector locking clip is properly closed.

Note! In some cases this error message can be shown in the panel and sometimes not. It depends how many signal is still connected between k100 and user interface. If the cable reconnecting does not help, then replace control panel assembly.

If Error 234-1 (_UI_POWER_BTN_STUCK) or -2 (UI_SCAN_BTN_STUCK) occurs restart the unit and if error still happens replace the control panel assembly SP00991.

MAINTENANCE

Annual maintenance is not mandatory.

ROUTINE CHECKS WITHOUT OPENING THE UNIT:

- Scan a test image using INTRA DIGI IEC TEST PHANTOM SP00204 and check the image quality
 - Refer to the instructions provided with the test phantom for image quality criteria
- Check image geometry (measure the length and and recalibrate gear if necessary).
- Check that the unit reads and shows all 4 IP sizes properly
- Check all Imaging plates by exposing without a phantom
 - No scratches, spots etc.
 - Need of cleaning
 - Need for replacing

ROUTINE CHECKS WHEN UNIT OPENED:

DO NOT USE ALCOHOL OR ANY OTHER LIQUID FOR CLEANING PLATE CARRIER RAILS. DO NOT GREASE THE RAILS.

- Check the drive belt tension:
 - Rotate drive wheel manually slowly >> the motor drive shaft rotates along with
 - Command **<e>** and observe the movement of the plate carrier
 - There is no adjustments for drive wheel. If it slips you can change the belt or motor holder if cleaning does not help.
- Clean drive belt, motor shaft and drive wheel + conveyor belt and it's drive wheels
 - Use lint-free cloth dampened with rubbing alcohol (ethanol)
 - Clean the inside surface of the plate carrier belt. Clean also the drive shaft of the plate carrier belt. Rotate from drive wheel back and forth to ease the cleaning.
 - Remove drive belt from motor shaft and drive wheel. Press the motor towards the wheel and push the belt off. Clean the motor shaft, drive wheel and belt. Reinstall the belt.
- Tighten the plate carrier (conveyor) belt if gets too loose (=the plate carrier not moving properly).
 - See instructions "Plate carrier Belt (conveyor belt): Tension check and adjustment" in this manual
- Clean plate carrier rails if dusty
 - Use dry lint-free cotton cloth for cleaning, use only dry lint-free cloth
- Check that the flywheel on the motor shaft is not touching the belt
- Check that the plate carrier belt drive pulley (close to front plate) is properly fastened

Plate carrier belt (conveyor belt):

Tension check and adjustment

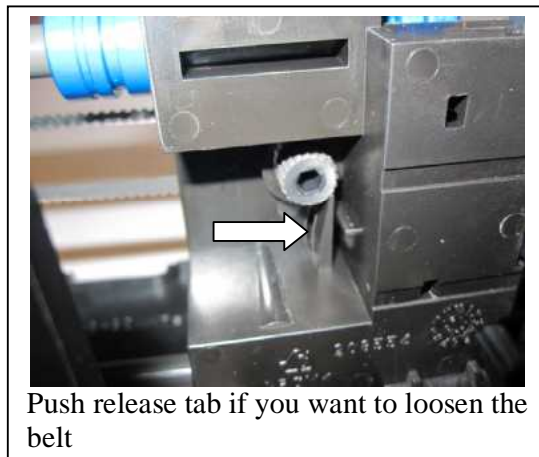
Plate carrier tension check:

- Suitable tension of the belt is checked with the special tool (Belt tension checking tool SP00984)
- Command **<e>** and observe the movement of the plate carrier

Belt tension adjustment:

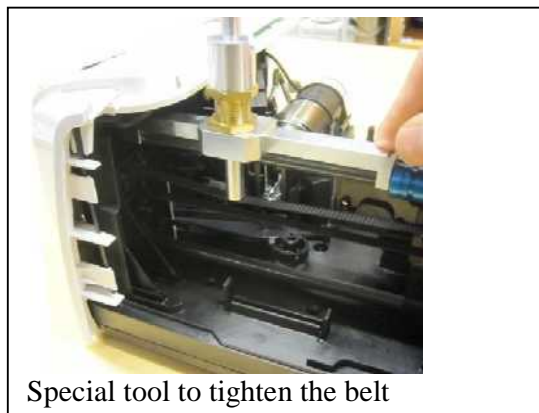
Use of either

1. Torque wrench, use 50Ncm moment.
 2. Special tool to adjust correct torque (SP00984).
- Move plate carrier as far back as it goes by manually rotating the drive wheel.
 - Release the locking by pressing the tab at the back face and loosen the adjustment screw (allen hex 3mm tool) at the front face of the plate carrier. Needed only if belt is too tight.

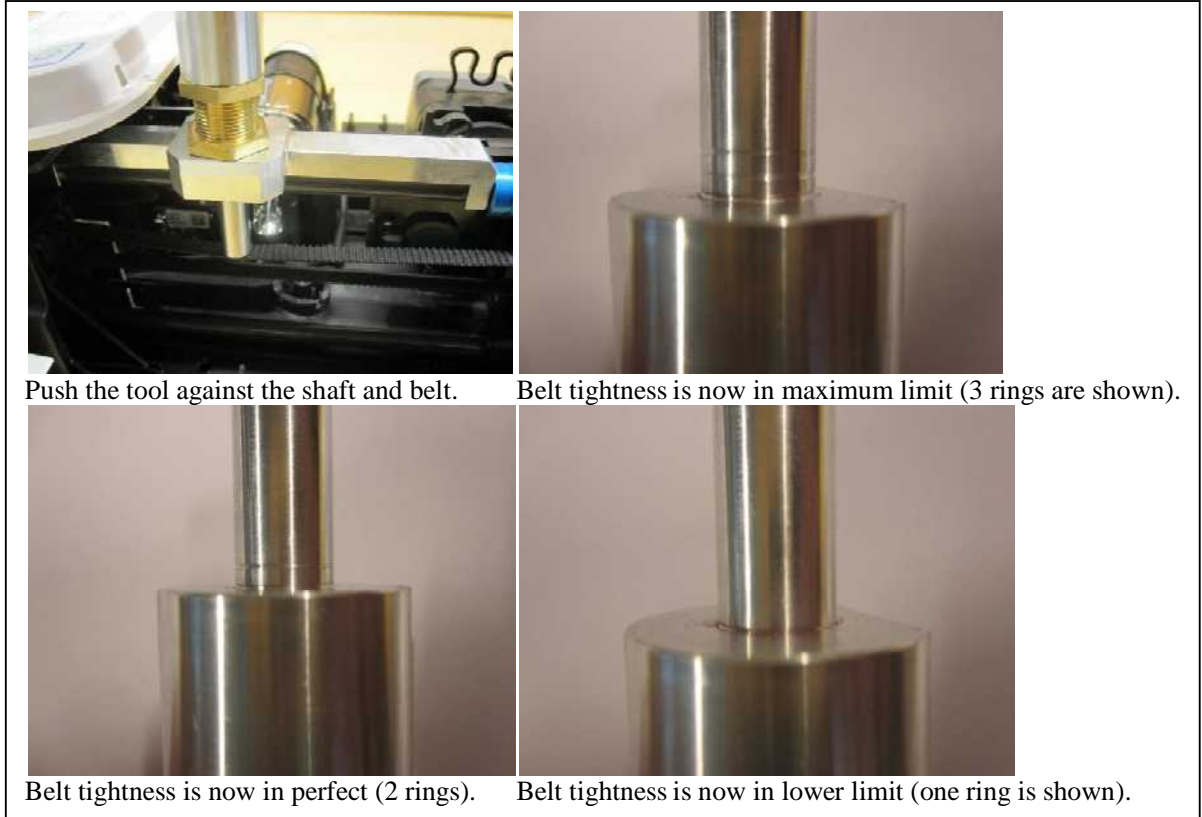


Special tool SP00984

- Insert special tool in the middle of the belt. Ends of the tool against the end pieces of the plate carrier rail mechanism.



- Rotate adjustment screw with 3m hex key so that the second ring line of the adjustment tool is visible.



Torque wrench

- If you have torque wrench use 50Ncm moment.
- Check operation with <e> command
- Make motor gear calibration with <calgear> command.

INSTRUCTIONS FOR CHANGING SPARE PARTS

Always scan test images after changing spare parts. See appendix 1.
You must also evaluate IEC 62353 compliance after repair. See appendix 2.

Note! All clips and details in chassis base assembly are rigid and meant to be bent only with great care. Do not use excessive force.

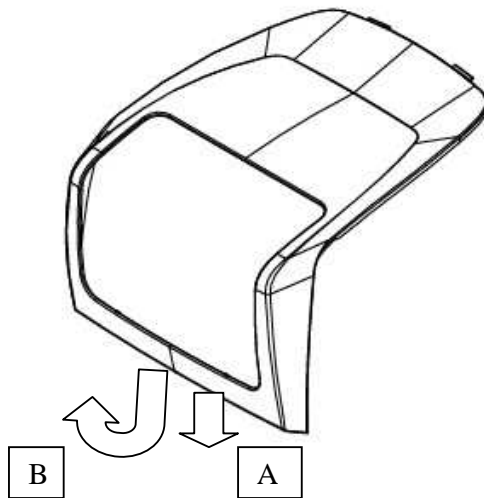
REMOVING AND INSTALLING THE COVERS

Before opening covers turn the power off and detach power and Ethernet connectors

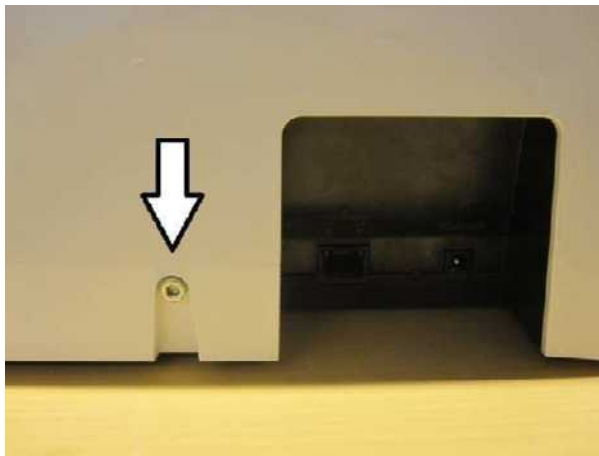
COLOR ACCENT PANEL



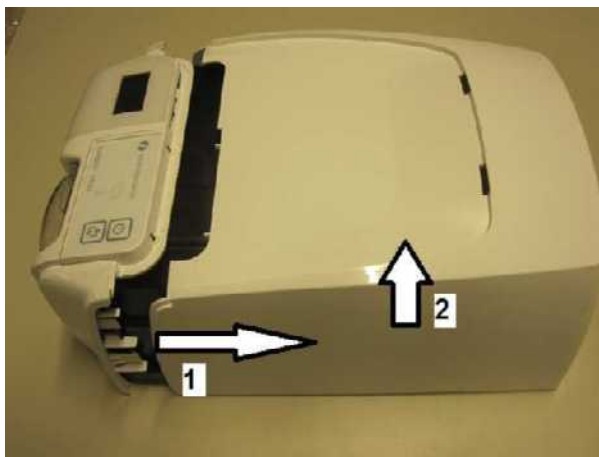
Pull the cover down (A) and then lift it up (B)



BACK COVER



Remove the screw from backside

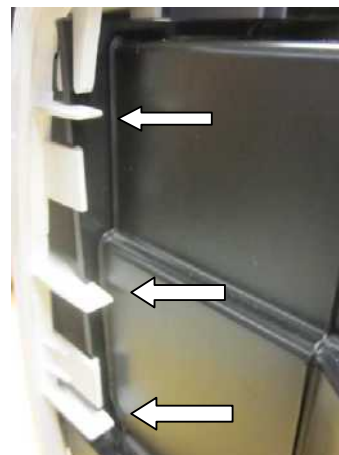


Move the cover backwards (1) and then lift it up (2)

FRONT COVER



Press the two tabs on the right and left side to release the cover and remove it.



When you install the front cover back check that it is directed correctly to the slots. Ensure that the tabs lock the panel.

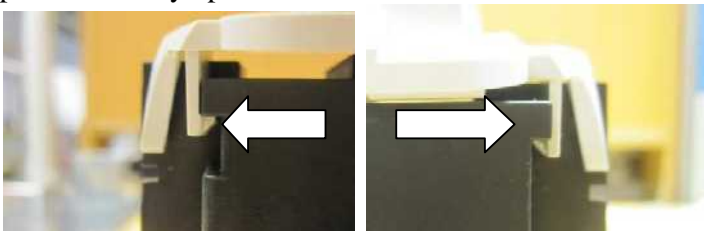
CONTROL PANEL



First lift the both connector locking tabs up, then pull the cables out from the connector.



Pull both right and left side locking clips and lift the control panel assembly up



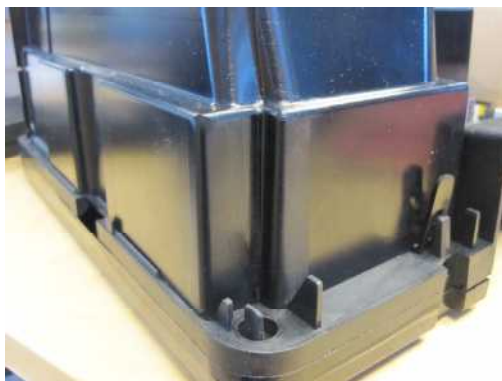
LIGHT COVER



Press the tab on back side and lift the cover up and backwards to remove the light cover



When you install the light cover back check carefully that it goes correctly to grooves of chassis at both sides (1). Then push it forward (2) and down. (3)



Check that the light cover is correctly installed. The chassis is locked to the hole in the clip of the light cover. There should be no gap between chassis and the light cover.

The tab in the light cover goes to the hole in the chassis. This is used in the safety switch opto on K100 board to block the light. If after reassembly safety switch error occurs the light cover might be raised from the chassis.

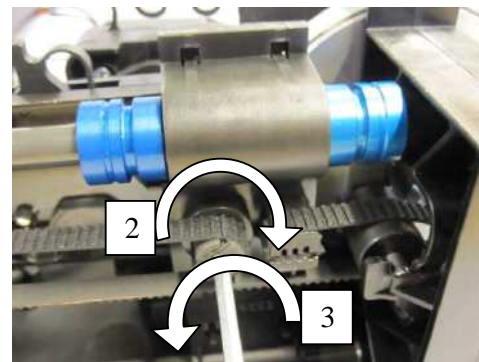
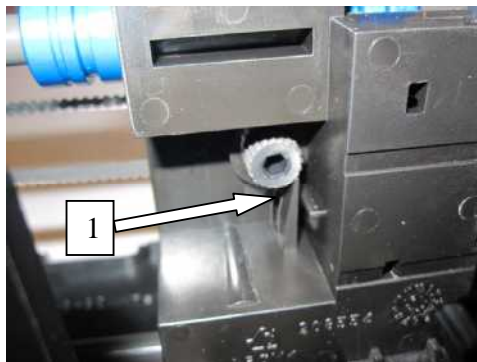
Replacing MOVEMENT KIT PARTS (SP00912)

First remove the covers and the control panel assembly. See sections REMOVING AND INSTALLING THE COVERS and Replacing Control Panel Assembly (SP00991)

Keep old and new parts separated so that you don't mix them.

Remove old parts

- Detach motor cable from K100 board
- Remove the drive belt from the motor shaft by pressing the motor towards the wheel and sliding it away from the motor shaft
- Turn motor holder away from the wheel and rise the motor upwards.

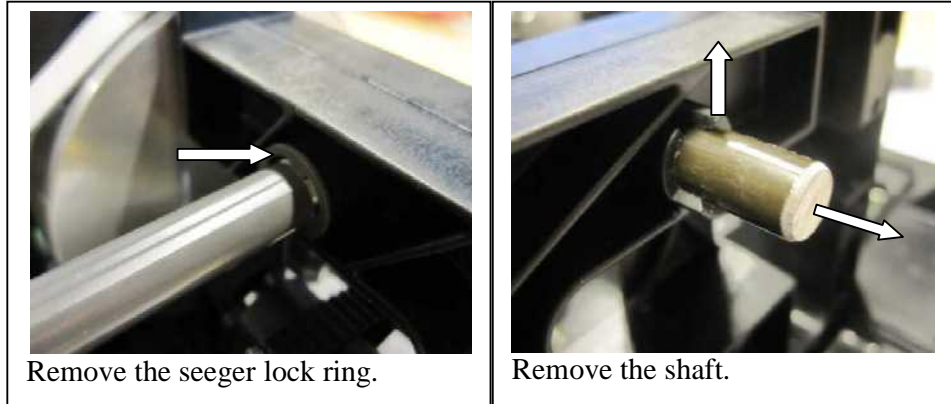


Remove the readout belt. Release the locking by pressing the tab (1) at the back side of the plate carrier and simultaneously turning adjustment screw slightly clockwise (2) and then releasing the black belt mechanism (3). (allen hex 3mm tool) at the front face of the plate carrier. After that remove the belt. See images below.

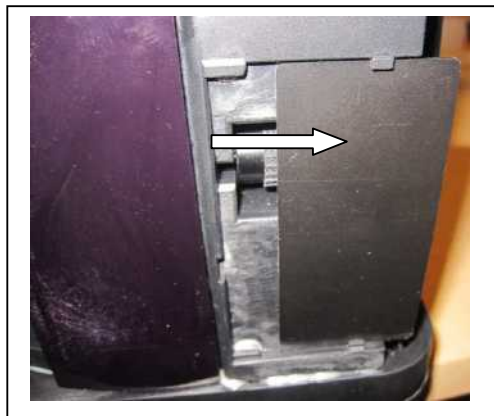
- Now you can remove the pulley assembly.



- Remove the seeger lock ring from the shaft.
- Next remove the shafts. Lift the clip of the upper shaft and remove the shaft.
- Lift the plate carriage assembly away.
- Remove the lower shaft the same way as the upper.



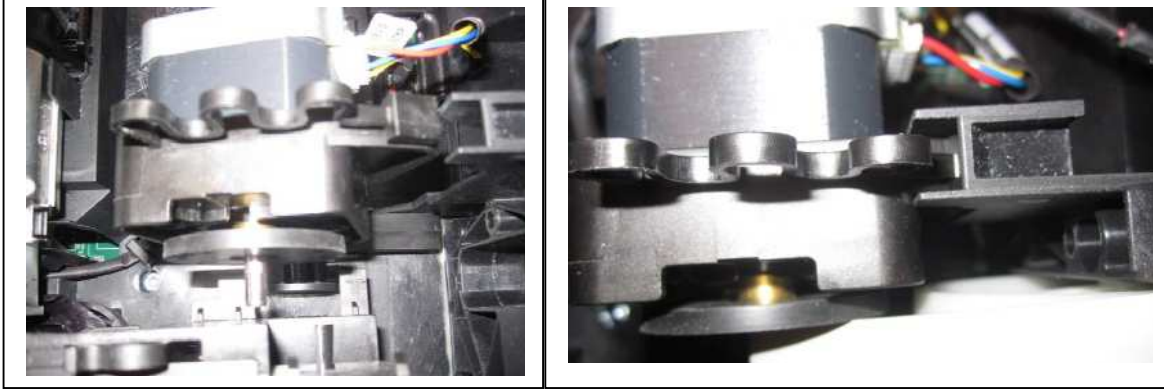
- Slide belt pulley cover away and remove the belt pulley from front side.



Installing new parts

- Set the lower shaft
- Add the carriage assembly and the upper shaft.
- Add seeger lock ring to the both shafts.
- Check also that the carriage can move smoothly from the back to the door. It should not hit to K200 board.
- Install the motor holder assembly. Remark that it goes only in the correct position.

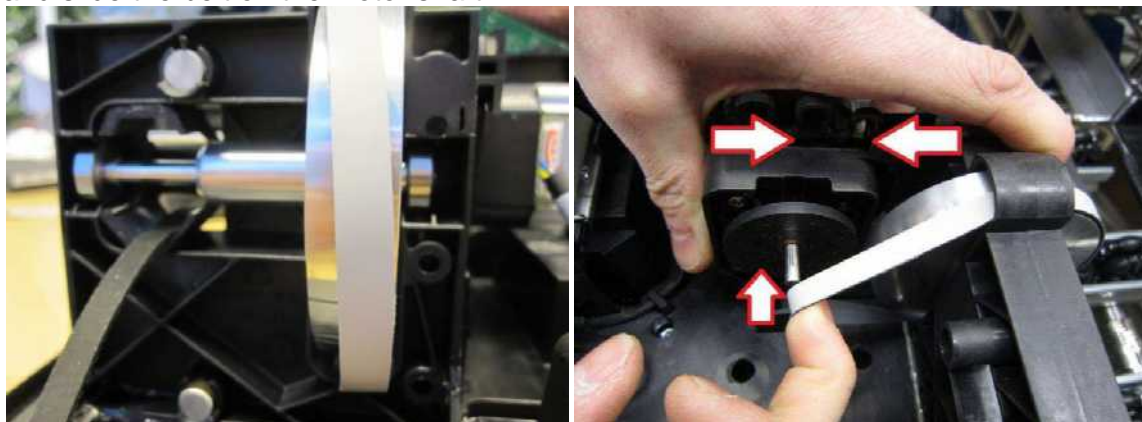
Connect motor cable to K100 and set the motor holder spring correctly. See image.



- Add grey belt around the belt pulley. Push the wheel to its place. Check that the bearings goes perfectly to its correct place.

Note! Replacing of the bearings may pose unit to lowered image quality! Use only bearings that comes with the service part.

Add the drive belt first around the wheel then push the motor holder towards the wheel and slide the belt on the motor shaft.



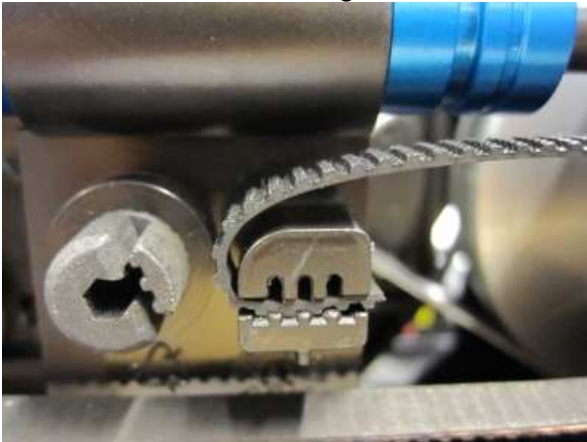
Add the needle roller to the small wheel and install it to its place



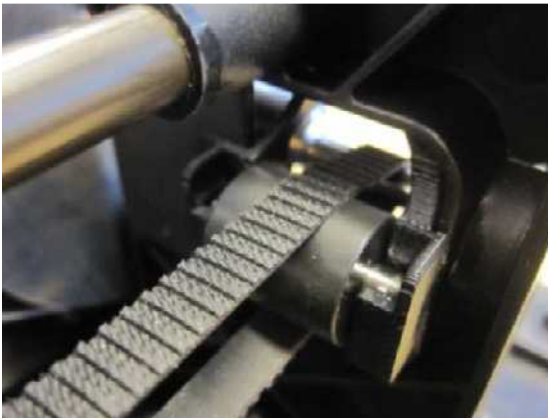
Add the dowel pin to the small wheel and install it to its place.



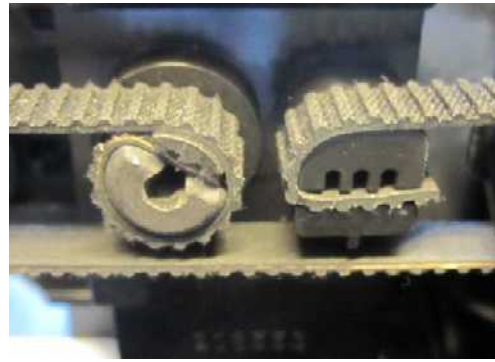
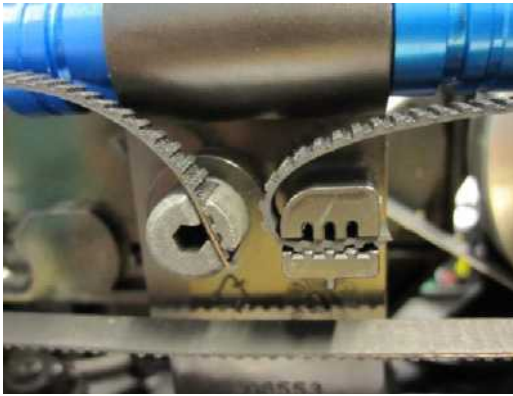
Install the readout head belt as in images.
First attach it to the carriage.



Put the belt around the back wheel and then around the wheel in the front so that it is centered.



Install the belt to the carriage as in image below.



Belt assembled correctly. The belt is tightly on the wheel

Tighten the belt using 3mm hex key.

Use of either:

1. Torque wrench, use 50Ncm moment.
2. Special tool to adjust correct torque (SP00984)



50Ncm moment



SP00984

Note! Excessive tightening may break the chassis base assembly.

Install the belt pulley cover to the chassis

Install the control panel assembly

Install the light cover

Install the front cover, back cover and color accent panel.

Attach the power adapter

Attach connection to PC

Turn the unit on and start S2terminal

Wait that the unit starts

Go to service mode and type <calgear>. The unit now calibrates linear movement

After calibration quit from service mode and turn the unit off and again on. The device should now start without errors.

Scan test images

Test that start position is correct. Expose and read image, check horizontal position from image. Adjust with <start xxx>. Bigger value moves image left in application window, smaller value right. XXX can be also negative.

Replacing OUTER COVERS (SP00989)

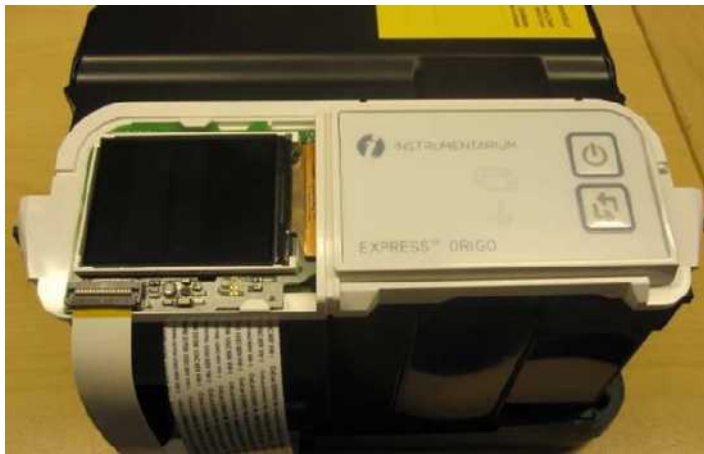
See removing and installing the covers

Replacing INNER LIGHT PROTECT COVER (SP00914)

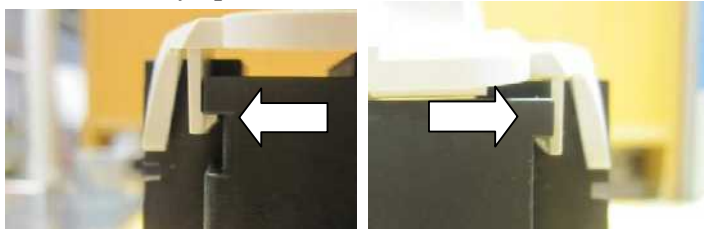
See removing and installing the covers

Replacing CONTROL PANEL ASSEMBLY (SP00991)

First Remove the color accent panel, back cover and the front cover.



Pull both right and left side locking clips and lift the ui frame assembly up



Removing old control panel assembly.

Release the tabs from both sides and lift the panel. Detach the cable from K100 board.

When you install the new panel check the correct installation.

Remember connect the cable back to K100 board

Install the main and front cover back

Attach the power adapter

Attach connection to PC

Turn the unit on and start S2terminal

Wait that the unit starts. This should happen without errors.

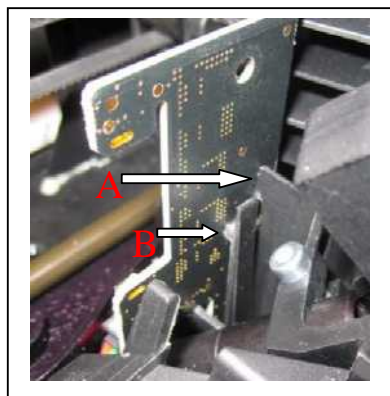
Take a test image

Replacing K200 HOME-LASER-DETEC IPS-2013 (SP00916)

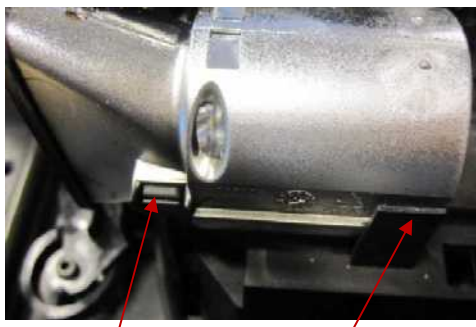
1. First Remove the back cover
2. Remove the Light Protection cover
3. Detach PMT connectors
4. Remove PMT keeper



5. Remove PMT
6. Release light collector clip on the right side first and rotate light collector a bit and lift light collector away.



7. Release the clip that locks the board to the chassis (marked B in image) and lift the K200 board from the connector
8. Insert the new K200 board. Check that it goes to connector and that the slot on the pcb goes to the holder (marked A). Check that B locks the PCB correctly.
9. Install the light collector

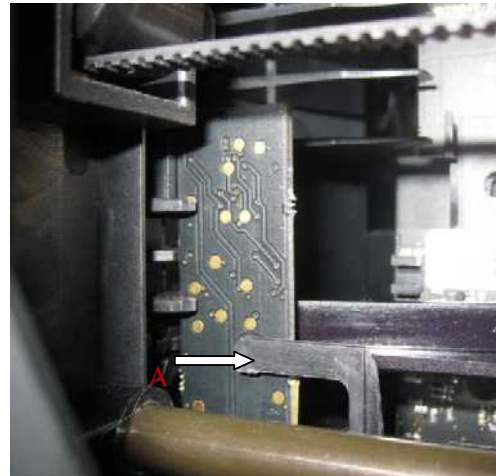


Correct installation of the light collector. Check that the clips lock the collector. There is a small oval shape hole in the light cover. Check that the PMT tube is pushed inside the light collector so that this hole is plugged.

10. Insert the PMT and the tube keeper back.
11. Connect PMT connectors J106 and J113 to K100 board.
12. Insert the light cover
13. Insert the main cover
14. Attach the power adapter
15. Attach connection to PC
16. Turn the unit on and start S2terminal
17. Wait that the unit starts.
 - If error 12 occurs turn the device off and check installation
 - Error 23 can occur because K200 is not calibrated but neglect it.
18. Go to service mode and type <calerase>. The unit now calibrates erasing leds.
19. After calibration quit from service mode and turn the unit off and again on. The device should now start without errors.

Replacing K300 PLATE DETEC REFL.SEN IPS-2013 (SP00917)

1. Remove the back and front covers
2. Remove the Light Protection cover
3. Release K300 locking lever (A in image) and lift the board from K100 connector

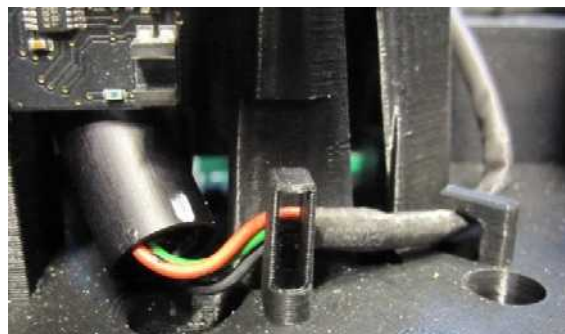
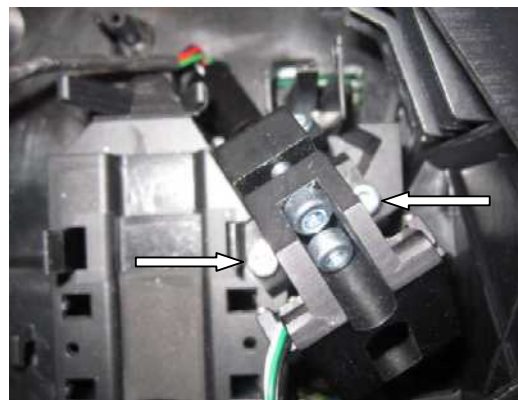


4. Install the new K300. Check that PCB is correctly between guides and then press it to the connector.
5. Check that the locking lever is in PCB hole. See images
6. Install the light protection cover back
7. Install the back and front covers back.
8. Connect the power adapter, connect the device to PC, start S2terminal and turn the device on.
 - If error 13 occurs during start turn the device off and check installation
 - neglect error 34
9. Wait until the device is ready, go to service mode and calibrate the sensor by typing <calpr>
10. When calibration is ready restart the device. Now it should start without errors.



Replacing LASER AND MIRROR ASSEMBLY IPS-2013 (SP00918)

1. Remove the main and front covers
2. Remove the light cover
3. Remove the control panel assembly
4. Remove the PMT keeper, PMT and the light collector
5. Remove K200 board
6. Detach mirror connector J109
7. Detach laser connector and release the cable from all six cable holders
8. Open the two screws marked by arrows in image. Use 3mm hex key.
9. Lift assembly away.
10. Note! Do not touch the screws that are in the new assembly. The factory calibration fails if the screws are turned!
11. Install the assembly. Check that the pin and cavity at the bottom go to respective parts in the chassis. The assembly must be tightly on the chassis.
12. Attach the assembly by the screws
13. Attach mirror cable J109
14. Attach laser cable as in the image. It must in all holders.
15. Insert K200 board
16. Insert the light collector, PMT and PMT keeper.
17. Insert Control panel assembly.
18. Insert the light cover
19. Insert the back and front covers.
20. Attach connectors.
21. Turn the unit on and start s2terminal.
22. Calibrate mirror using command <calga> in service mode.



No adjustment is needed for laser because it is adjusted in the factory.

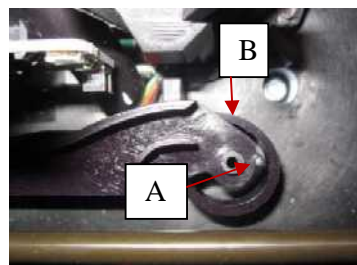
Replacing PMT (SP00919)

1. Remove the back cover
2. Remove the light cover
3. Detach PMT connectors
4. Release PMT keeper
5. Remove PMT
6. Add the new PMT. Push it into the light collector up to the stop.
7. Attach PMT keeper
8. Attach PMT connectors
9. Attach the light cover
10. Attach the back cover
11. Attach connectors
12. Turn the unit on and start s2terminal.
13. Go to service mode
14. Set PMT voltage using command <hv xxx> where xxx is the value for HV which you can take from the label attached to the new PMT.



Replacing UNIT DOOR (SP00920)

1. Remove the back cover
2. Remove the light cover
3. Remove PMT keeper, PMT and the light collector
4. Move carriage as back as possible
5. Release clip A by pressing it slightly for example by a screwdriver and rise the door lever. Release spring B by pressing it.
6. Draw the door out. It is easier if you rotate the door 90°.
7. Insert the new door. Press the spring to get it to correct place, press the door lever down to get it locked to clips.



8. Check door operation by rotating the big wheel. When carriage moves forward it should open the door and when backwards the door should be closed.
9. Insert the light collector, PMT and PMT keeper
10. Insert the light cover
11. Insert the back cover

FIRMWARE AND CORE UPGRADE

- You do not have to systematically upgrade newest version of firmware and to all EXPRESS™ Origo units, unless Instrumentarium Dental technical service have instructed so.
- **Instrumentarium Dental strongly recommends that the latest FW and core are all updated at the same time.**
- **Using latest FW and core versions provides the unit with all features and improvements**
- **Firmware and core upgrading is done using s2terminal -program**
- All updated files and related detailed instructions are described in the release letter of FW to be updated

Firmware

Copy the new firmware file (.srec) to the dedicated folder (for example **c:\s2terminal**) with the s2terminal files = from which you will start the s2terminal.

Following commands are needed to upgrade FW.

- Type **<xh>** in the command prompt to see the instructions for the command syntax.
- Command **<xs x.xx>** Starts the firmware upgrade.(replace x.xx with version number in FW file name)
- When upgdare is ready, **[ACK] FW updated.** is displayed on the screen.
- Restart scanner.

If the upgrading was succesfull, you should have the output similar to follows:

xs

Connected to EXPRESS

Software (Firmware) version X.XX

Core version XX

Serial number XXXXXXXX

Etc... ending with EXPRESS vX.XX> (**vX.XX should now equal to the new firmware version**)

Switch scanner unit off and on to see that there are no errors during start up.

Core upgrade

- You do not have systematically to upgrade newest core to all scanner units, unless technical service has instructed so, but it might be good thing to do in case you do any other service for scanner unit
- Firmware upgrading is done using s2terminal -program

1. Copy the core file to the same, dedicated folder with s2terminal files (for example **C:\s2terminal**).

2. CHECK THAT Application SW IS CLOSED!

3. Execute the s2terminal program using the unit's IP –address

4. Command **<xc XXX>** (**XXX** = version number in the core filename)
>> Starts the core upgrade

5. Wait until s2terminal tells that upgrade is finished

6. Switch scanner unit off and on to see that there are no errors during start up.

TROUBLESHOOTING

Most failures can be located by error codes. See Error Messages section. However it is not always possible display the error code.

Errors without error code

The unit does not turn on when you press the power button

Check if the power led near DC jack is green. If not, check if the led at power adapter is green.

If not detach the DC plug from the unit. If led at power adapter does not turn to green check that you get voltage from wall outlet. If AC voltage is ok the power adapter is faulty. Change the power adapter.

If the led at adapter is green when adapter not connected to K100 but turns off when DC plug is connected K100 board is faulty. This is also the case when power adapter led turns off when power button is pressed. If power led is green but pressing the power button does not turn the unit on check if control panel assembly is faulty.

Remove the main and front covers. Press start button at K100 board.



If the unit now turns on check that control panel flex cable is connected correctly. If it is ok you have to change the control panel assembly.

LED at control panel does not work

All led indicators should lit shortly when you press power button to turn the unit on. If some led is off the control panel has to be changed. But check first that cable connected correctly to K100 and control panel

K300 does not recognize image plate

K300 operation is checked during boot. If K300 fails to recognize image plate during normal use check first that it is correctly installed. After that you can try to calibrate it by command <calpr> in service mode. Then restart the unit and scan an image plate.

If still not working change autoscan setting to 0 in service mode. After that plates can be scanned in manual mode: image is scanned when start button is pressed. Also if error 34 occurs you can still use the unit in manual mode until the new K300 board is available.

Approved

Image errors



Improper use of the hygiene accessories

Shows a “ghost image” having possibly shapes of the edge of the protective cover

Plate not properly shielded from light (with protective cover and hygiene bag) between exposure and readout

>> part of the image erased by ambient light

- Protective cover misused or not used at all

- Hygiene bags not sealed properly
- Improper, non-genuine hygiene accessories used

Improper X-ray settings used



Too dark image

Some areas showing uniform “black”

>> decreased diagnostic value

- Too long exposure time



Too light Image

Noisy image

Showing only part of the image

Showing wrong size of the image (Image smaller than actual IP)

- Too short exposure time

Ghost images, shadows



IP has been exposed twice without readout in between

- More than one image exposed to the same plate

IP has not been erased properly after readout

- Erasing light is monitored during normal operation. If light does not work, application SW shows warning

Improper aiming of the X-ray

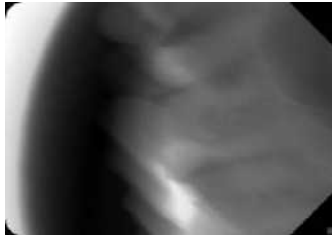


Cone cut (= X-ray beam has exposed only part of the IP surface)

Image may show on different (smaller) size than the IP used

- Check exposure procedure
- Use of proper holder avoids this

Unsharp / blurred images



Motion artefact

- Patient or X-ray cone has moved during the exposure (maybe because too long exposure time has been used)
 - Check exposure procedure
 - Use proper holder
 - Use shorter exposure time (increase kV if necessary after shortening exposure time)

Geometry distortion



Improper patient positioning

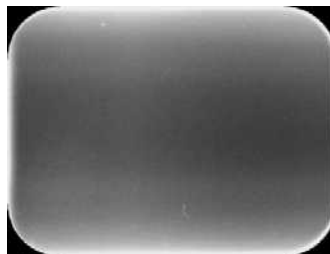
- Use proper holders to avoid this

Decreased contrast, shadows/shading, ghost images...

Improper storing of the imaging plates

- IP has collected background radiation because:
 - IP has been stored near X-ray unit
 - IP has been stored in the bag or in dark too long
- Use dedicated IP storage box to avoid these
- Alternatively, perform initial erasing for the plate(s)

White or grey dots/spots/stains in images

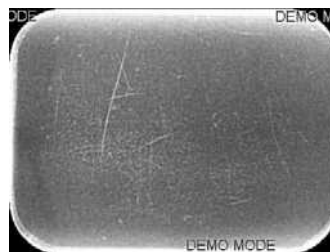


Dust or stains on the imaging plates

Any extra particle on top of the IP is visible on the image

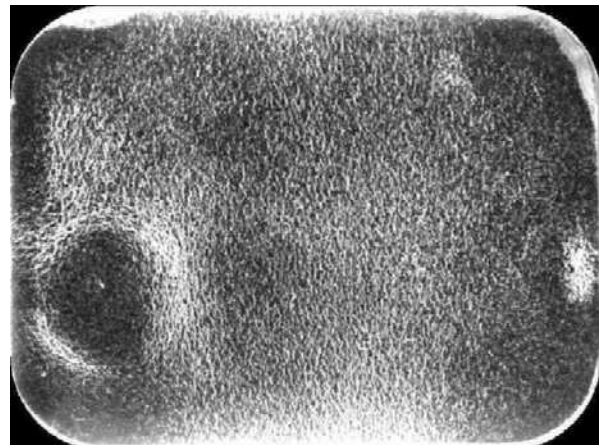
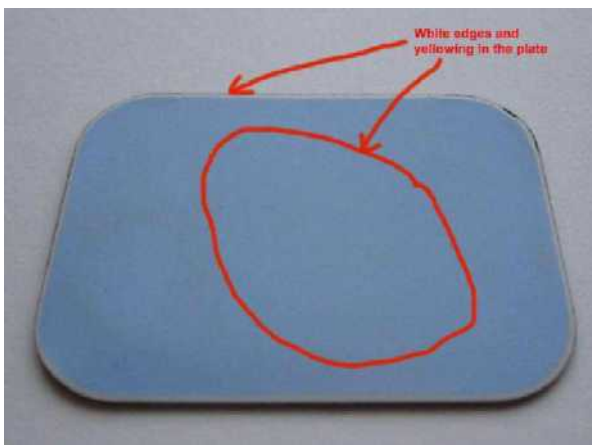
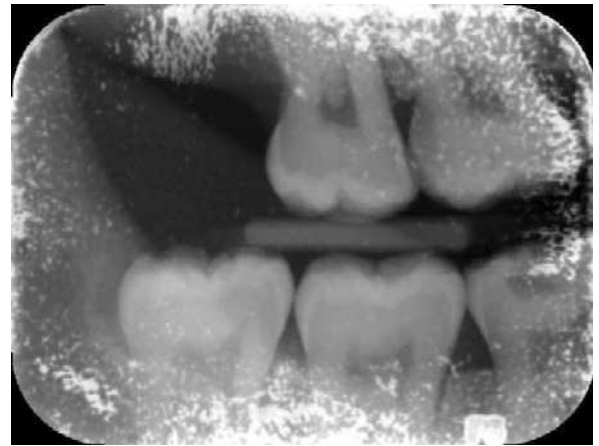
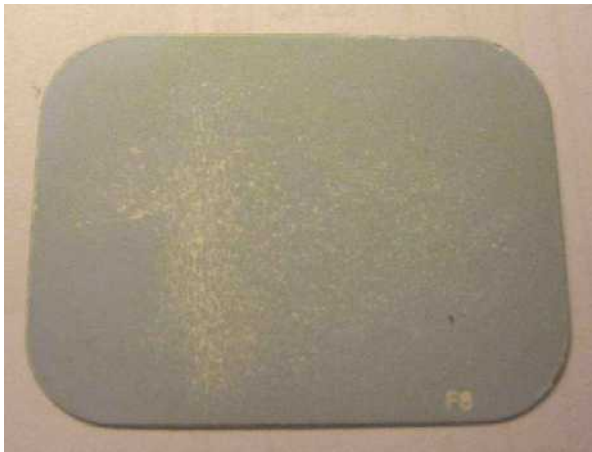
- Clean the plate(s), replace if cleaning does not help
- Pay attention on IP handling, storing and maintenance

Wearing of the imaging plates



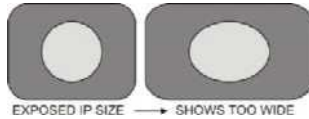
- Scratches, dots

- Clean the plate(s), replace if cleaning does not help
- Pay attention on IP handling, storing and maintenance



Problem	Active side top coat defect showing plate to be yellow, excessively rough sensitive surface. White from the edges. Color of sensitive surface changed.
Cause	Unsuitable cleaning liquid and/or unsuitable cleaning method Plate has been packed immediately after cleaning with ethanol Moisture caused IP degradation (plates perhaps packed when wet or moist) Leaking hygiene bags Current plates do not have such problems when used as intended
Cure	IP reached the end of its service life. Replacement of the plates needed. Check usage conditions of the plates: - Check how the plates are cleaned - Check that ORIGINAL hygiene accessories are used properly - Check that ORIGINAL hygiene accessories are used only once / each

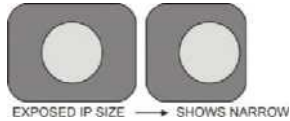
Image shows different size than the IP used



Shows too big (too wide) image compared to the IP used

Objects stretched horizontally

- Belt slipping / plate carrier movement too slow



Shows too small (too narrow) image compared to the IP used:

- Too short exposure time used
- X-ray cone cut (caused by improper aiming of the X-ray)

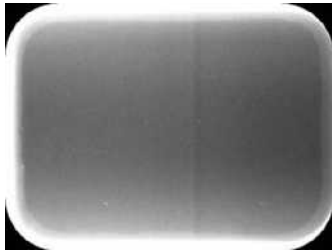
Circle on image



Shows circular shadow

- Exposure from the wrong side of imaging plate

Vertical stripe(s)



- Problem with plate carrier movement

Stripes caused by vibration, knocking or other external mechanical interference



Knocked once during readout

Vibration Knocked

Internal opto-mechanical components are sensitive for external mechanical interference.

Vertical stripes may be seen on the image if the unit is knocked, moved, shaking, vibrating etc. during the readout process.

- Locate the cause and origin of the mechanical interference.
- Position the unit on a stable, flat surface so that vibrations will not degrade the image quality.
- The unit must not be positioned so that it is touching other equipment.
- The unit must not be placed on top of or under other equipment.

Approved

White bar before image

White bar before the image plate start. Calibrate start position.

<start> command prints the current start value to the screen.

<start XXXX> Sets the new start position. XXXX=position in um.

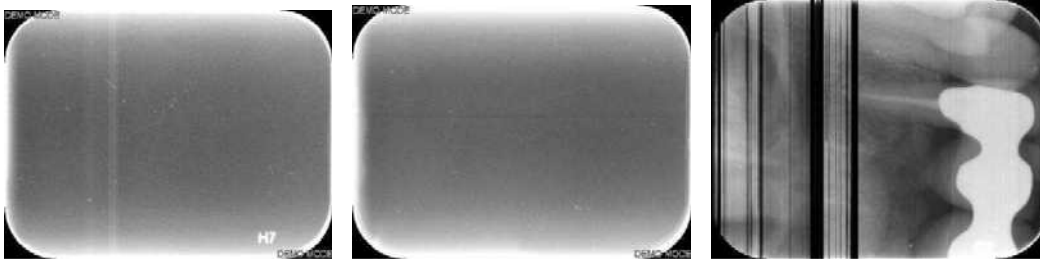
Example:

If there is a white bar that is about 0,8mm wide.

<start> gives a value -500. That is the current start value. Because you want to move 0,8mm the start position you must calculate $-500+800=300$.

<start 300> command set the new start position. Note that start value can be positive <start XXXX> or negative <start -XXXX>

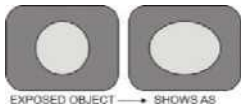
PMT problems



Shows vertical or horizontal stripe(s), random or repeated, sharp or smooth

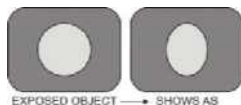
- PMT malfunction, may need scanner module replacement

Incorrect dimensions



Stretched (too wide) image

- Clean the drive belts + drive wheels, adjust the drive belt and perform calgear –calibration as instructed



Compressed (too narrow) image

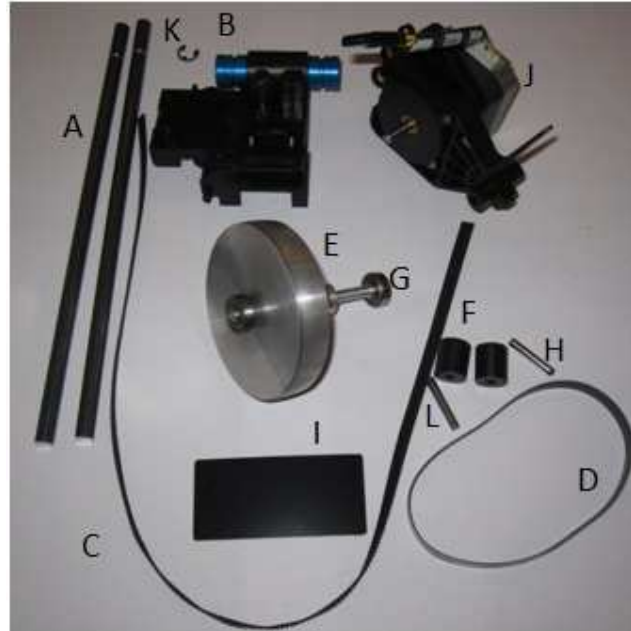
- Clean the drive belts + drive wheels, adjust the drive belt and perform calgear –calibration

SPARE PARTS

EXPRESS™ Origo has 10 spare part kits which are presented in following images.

1. SP00912 MOVEMENT KIT

- A. Shafts 2 pcs
- B. Imaging Plate Carriage Assembly
- C. Readout head belt
- D. Drive Belt 264x8
- E. Belt Pulley 73.8-5.4
- F. Belt Pulley 2pcs
- G. Bearing, 2pcs
- H. Dowel Pin 4H6X24
- I. Belt Pulley Cover
- J. Motor Holder Assembly
- K. Seeger lock ring 2pcs
- L. Needle roller NRB4X25,8-G2



2. SP00989 OUTER COVERS EXPRESS™ORIGO



Note! Because back cover includes type label, the unit serial number must be tell to the customer service that they can make correct label to the spare part.

3. SP00914 INNER LIGHT PROTECT COVER IPS-2013



4. SP00991 CONTROL PANEL ASSEMBLY



5. SP00916 K200HOME-ERASE-LASER-DETEC IPS-2013



6. SP00917 K300 PLATE DETEC REFL.SEN IPS-2013



7. SP00918 LASER AND MIRROR ASSEMBLY IPS-2013



8. SP00919 PMT, PHOTO MULTIPLIER TUBE IPS-2013



9. SP00920 UNIT DOOR IPS-2013



10. SP00984 BELT TENSION CHECKING TOOL



APPENDIX 1: TEST AFTER REPAIR

After the repair is completed, the following tests shall be done:

- Image quality test with INTRA DIGI IEC TEST PHANTOM SP00204. See documentation of the test phantom for details.
- 100 scan endurance test in field.

Perform endurance test

- Enter s2terminal
- Type command <test 5000 100>. NOTE: Do not use any other numerical parameters after test-command! Changing the numbers may damage the unit.
- Remove Ethernet cable from Unit

Check for possible errors after endurance test

- After endurance test is performed, check the display for the unit status

Check the service log

- Connect Ethernet cable again
- Enter service mode from s2terminal by command <s>
- Type command <log> and double-check if there are any NEW error codes, which have appeared during the endurance test.

Sign the service log

- Store performed service tasks into Unit service log by typing command <logsign xxxxxx>, where xxxxxx is free text inserted by service technician to be stored into log.
 - As an example:
<logsign John Smith: Replaced k200 board, calibrated and endurance test performed. OK.>
 - Note, maximum length of the logsign message is 1000 characters.

APPENDIX 2: ELECTRICAL SAFETY TESTING IN ACCORDANCE WITH THE IEC 62353 STANDARD FOR SCANNER

Introduction

All in-service and post repair electrical safety testing should be carried out in accordance with the IEC 62353 standard and/or in accordance with any local, state and national standards related to in-service and post repair electrical safety testing of dental/medical devices.

According to the standard in-service and post repair electrical safety testing should always be carried out after the device has been installed, repaired, maintained or serviced.

According IEC 62353 limit for Class II equipment leakage current is 100uA (direct method).

EQUIPMENT LEAKAGE CURRENT is defined as current flowing from MAINS PARTS to earth via the protective earth conductor and ACCESSIBLE CONDUCTIVE PARTS of the enclosure and APPLIED PARTS. The scanner unit does not have protective earth conductor or accessible conductive parts or applied parts so leakage current measurements are not needed.

Protective earth measurement is also not applicable to the scanner unit.

The power adapter has accessible conductive part (DC plug) but this is newer opened or serviced and it is always measured when delivered from factory. That's why repeated measurements are not needed.

More Information

- [1] IEC 62353:2007, Medical electrical equipment – Recurrent test and test after repair of medical electrical equipment

Warnings and precautions

Read and familiarize yourself with the warnings and precautions listed in the unit user's manual, Installation manual and Service manual.

Only service personnel trained and approved by the manufacturer of the unit are allowed to service the unit.

Observe any international, national and local electrical and safety requirements with regards the measurements and connections of the unit to a power supply.

Visual inspection.

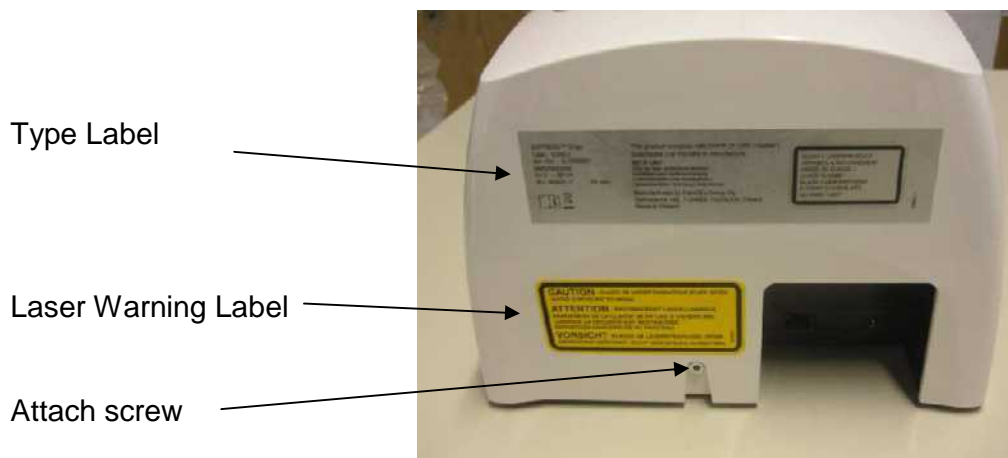
Covers and housings shall be opened only:

- if required for service/repair
- if there is an indication of inadequate safety.

Inspection:

-Check that type label and Laser Warning label are present and complete on the main cover

-Check that all covers are in good condition, no damage is allowed. The main cover must be attached on the backside by the screw. See image below.



-if you open the main cover check that the label on the light cover is ok.



-Check that power adapter is as specified in User Manual documentation (in technical specifications).

After testing, repair or adjustment, check that the unit is restored to the conditions necessary for normal use.

If the unit does not comply with the requirements it must be corrected or taken out of service until corrections are made.